

Speed Indicator Report for Kings Bromley Parish Council April 2025

- The following pages provide analysis captured from Kings Bromley Speed Indicator Devices (SID)
- There are two SIDs in Kings Bromley on the A515 and they are located:
 - Opposite Bradbury Lane – Indicator board facing traffic into the village
 - Opposite Leofric Close – Indicator board facing traffic into the village
- The data was captured for every vehicle during the following period for March 2025 (accurate to each minute and +/- 1mph)
 - Bradbury Lane between 00:00 on 1st March 2025 to 23:59 31st March 2025
 - Leofric Close between 00:00 on 1st February 2025 to 23:59 31st March 2025



SUMMARY REPORT 1st to 28th February 2025

LICHFIELD

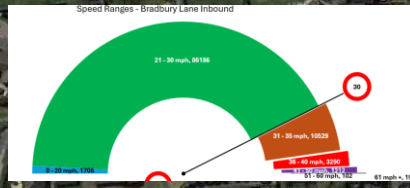
95,954 vehicles

84,020 vehicles

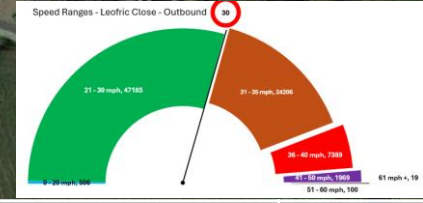
93,944 vehicles

89,318 vehicles

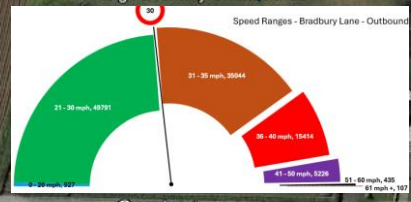
YOXALL



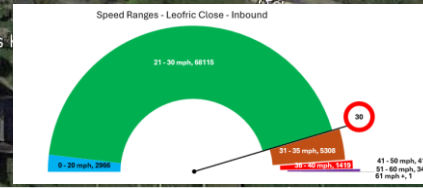
Average speed	27 mph
Highest speed recorded	80 mph
Highest Speed hour of day	00:00 - 01:00
Busiest hour of day	07:00 - 08:00
Hour of day with highest average speed	02:00 - 03:00
Vehicles over 36mph	3573



Average speed	31 mph
Highest speed recorded	94 mph
Highest Speed hour of day	08:00 - 09:00
Busiest hour of day	16:00 - 17:00
Hour of day with highest average speed	02:00 - 03:00
Vehicles over 36mph	11276



Average speed	30 mph
Highest speed recorded	94 mph
Highest Speed hour of day	16:00 - 17:00
Busiest hour of day	16:00 - 17:00
Hour of day with highest average speed	02:00 - 03:00
Vehicles over 36mph	14650



Average speed	26 mph
Highest speed recorded	66 mph
Highest Speed hour of day	00:00 - 01:00
Busiest hour of day	16:00 - 17:00
Hour of day with highest average speed	02:00 - 03:00
Vehicles over 36mph	2321

Conclusions

Vehicle Count Bradbury Lane			
Speed Bracket	Inbound	Outbound	Totals
0-20	3,891	2,044	5,935
21-30	80,265	42,566	122,831
31-35	8,225	24,760	32,985
36-40	2,469	10,485	12,954
41-50	992	3,795	4,787
51-60	91	304	395
>60	21	66	87
Totals	95,954	84,020	179,974

Vehicle Count Leofric Close			
Speed Bracket	Inbound	Outbound	Totals
0-20	3,447	683	4,130
21-30	77,061	54,349	131,410
31-35	6,489	27,636	34,125
36-40	1,724	8,658	10,382
41-50	559	2,452	3,011
51-60	34	143	177
>60	4	23	27
Totals	89,318	93,944	183,262

Law Enforcement Requirement	Inbound	Outbound	Category
Compliant	84,156	44,610	-
Non Compliant Warning/Fine	8,225	24,760	Band A Fine
Non Compliant Fixed Penalty	2,469	10,485	Band B Fine
Non Compliant Ban	1,104	4,165	Band C Fine
Total Law Enforcement Required	11,798	39,410	

Law Enforcement Requirement	Inbound	Outbound	Category
Compliant	80,508	55,032	-
Non Compliant Warning/Fine	6,489	27,636	Band A Fine
Non Compliant Fixed Penalty	1,724	8,658	Band B Fine
Non Compliant Ban	597	2,618	Band C Fine
Total Law Enforcement Required	8,810	38,912	

Key Data Takeaways from the KB SID Analysis (March 2025)

1. Traffic Volume

- Data shows a significant reduction in traffic entering, and a dramatic reduction in traffic leaving, the village on Lichfield Road (probably due to drivers avoiding the roadworks that ended on 17th March at 13:22 hrs).

2. Law Enforcement

- Data shows significantly more drivers speeding on Lichfield Road than Yoxall Road, even when roadworks are in place, clearly showing the priority of focus for Law Enforcement, which is why Staffordshire Police has recently deployed mobile speed enforcement teams here.

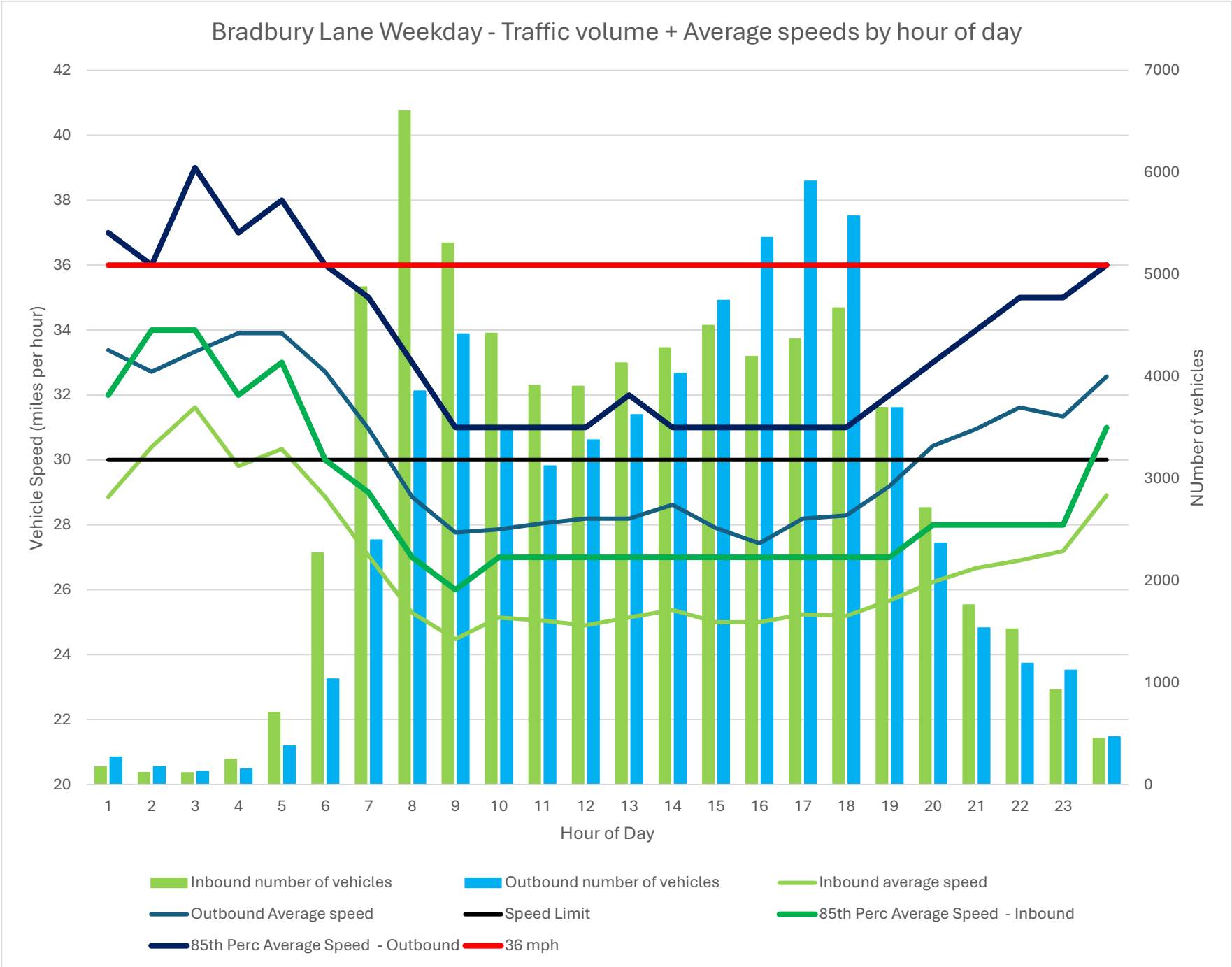
3. Enforcement Implications & Recommendations

- Speeding is a persistent issue, with significant enforcement potential.
- High volume of Severe speeding incidents (exceeding 41+ mph) suggest a potential danger to residents and pedestrians

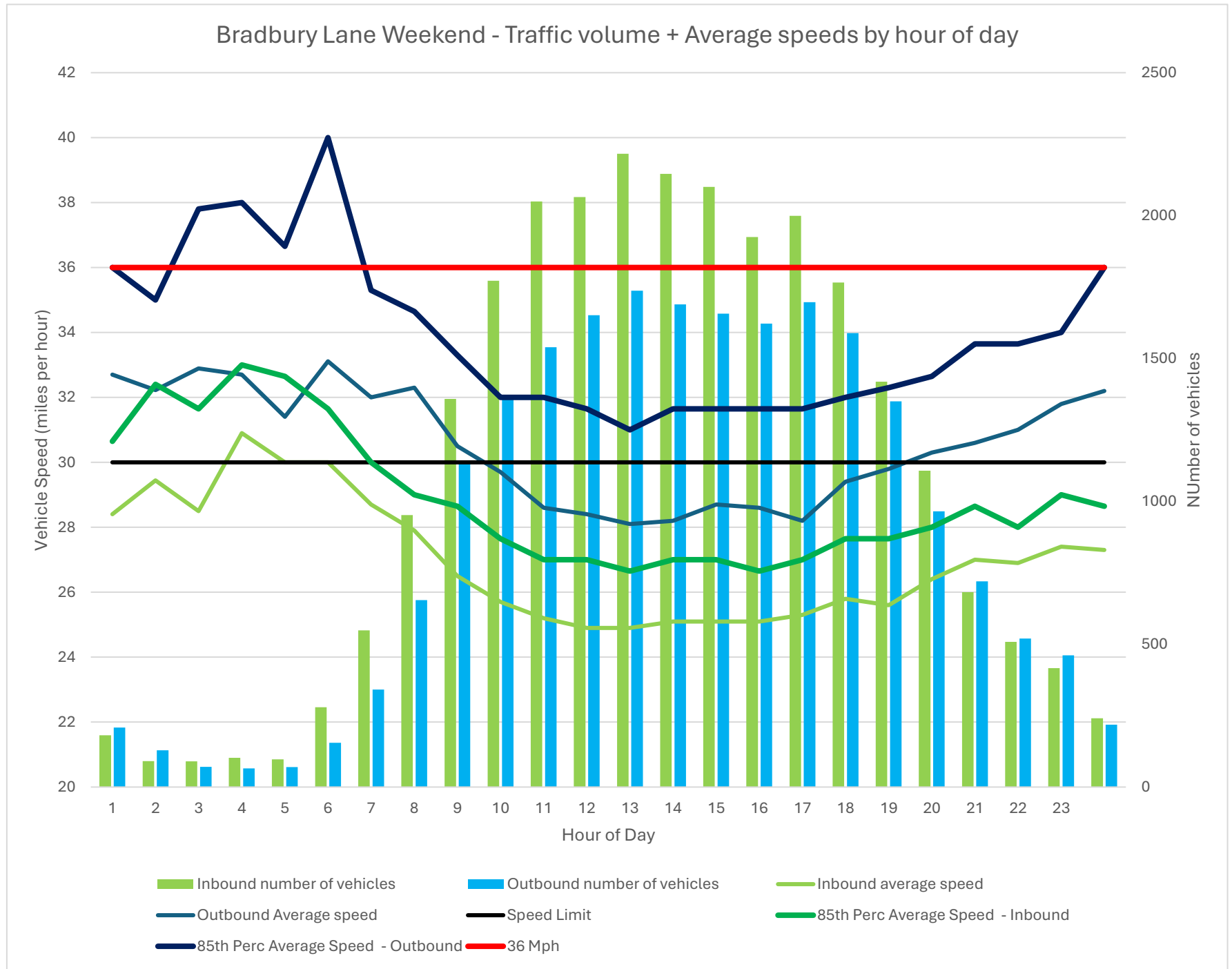
Conclusion

- **This data strongly supports the installation of law enforcement cameras.**
- **Enforcement should focus on Lichfield Road due to its higher volume of speeding violations (based on the last three months data).**
- **Kings Bromley Parish Council should seek investment for a SID on the Alrewas Road based on Staffs County Highways survey conducted in July 2024**

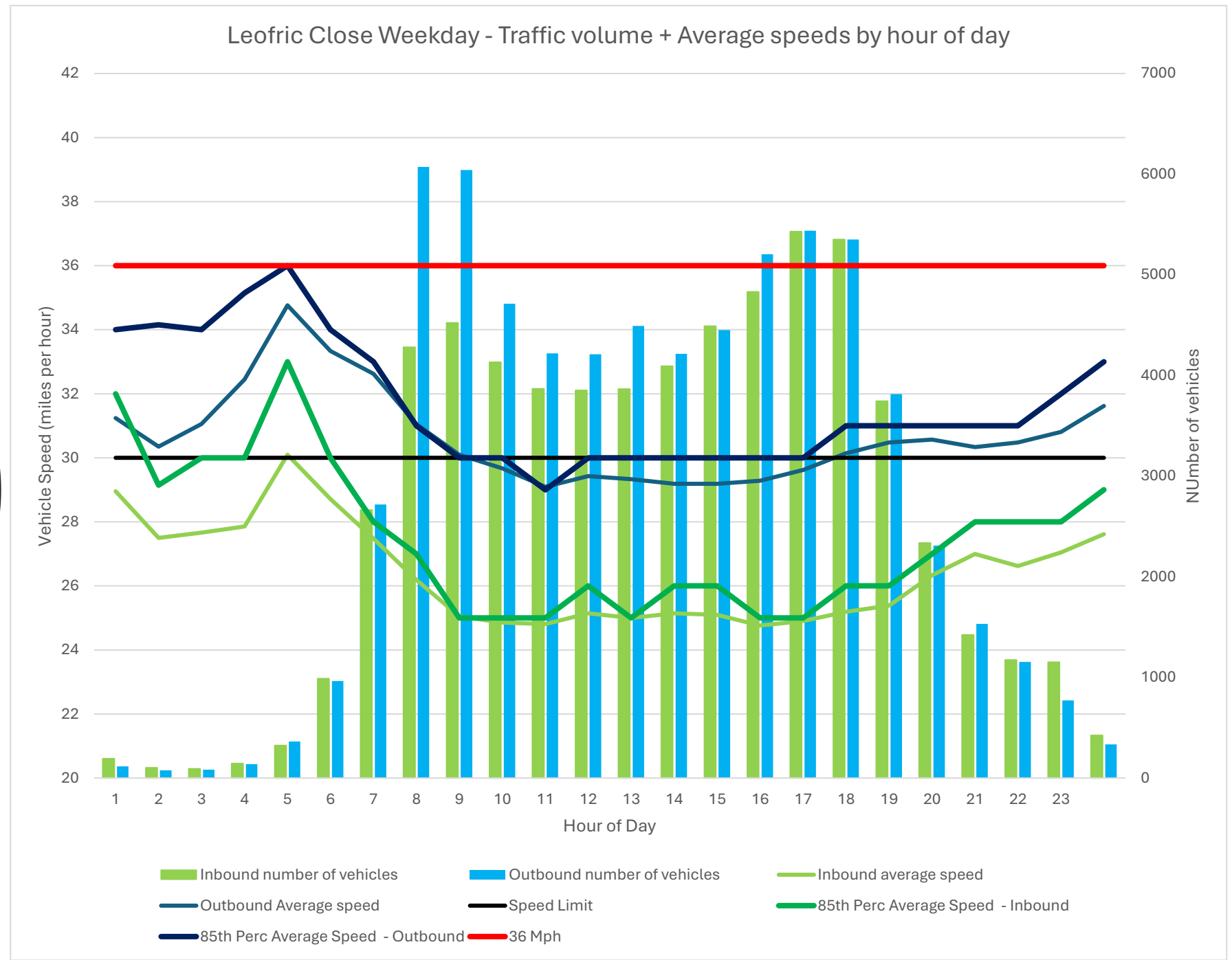
Bradbury Lane –
 Traffic volume
 + Average speed
 +85% Percentile
 by hour of day
weekday



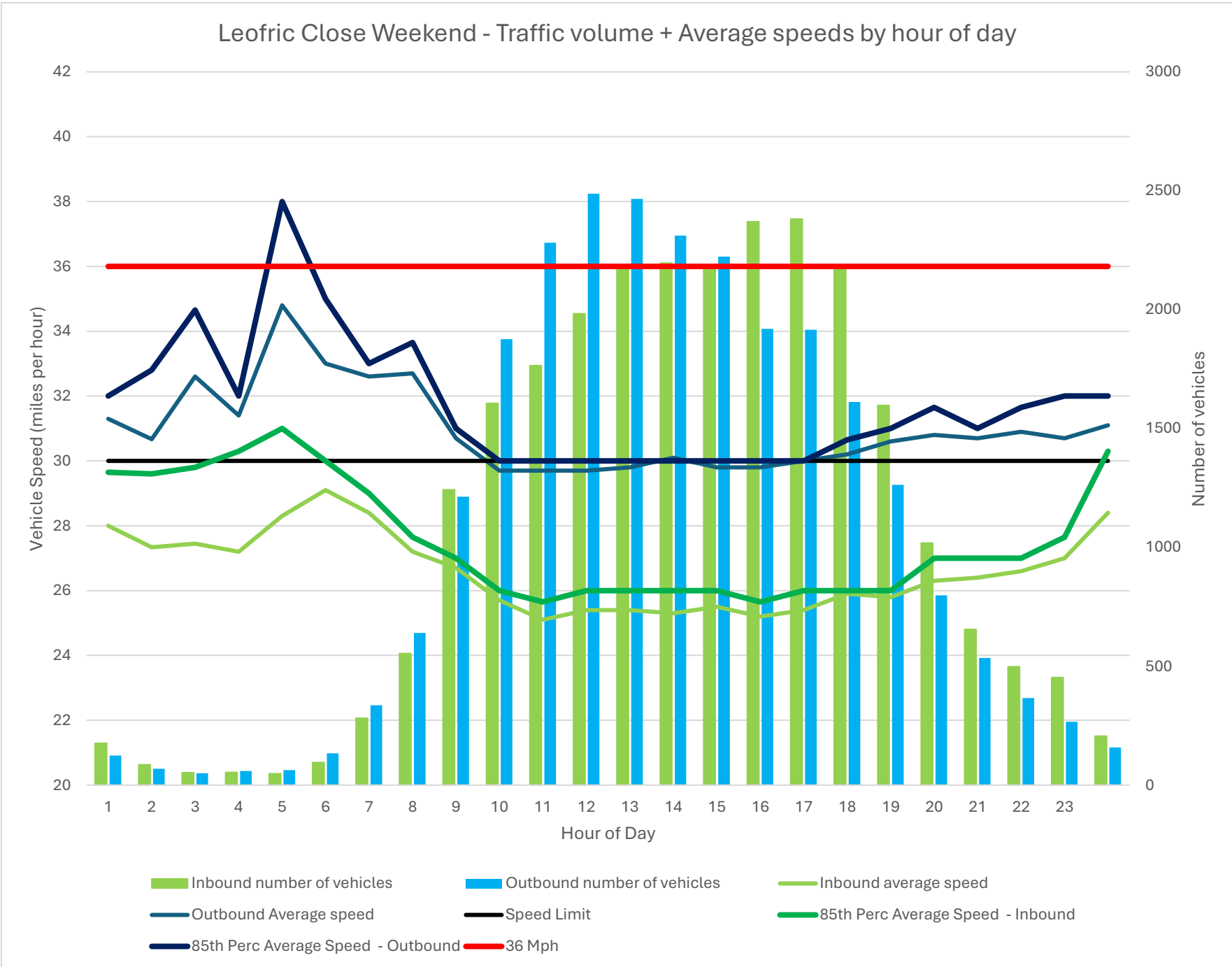
Bradbury Lane –
 Traffic volume
 + Average speed
 +85% Percentile
 by hour of day
weekend



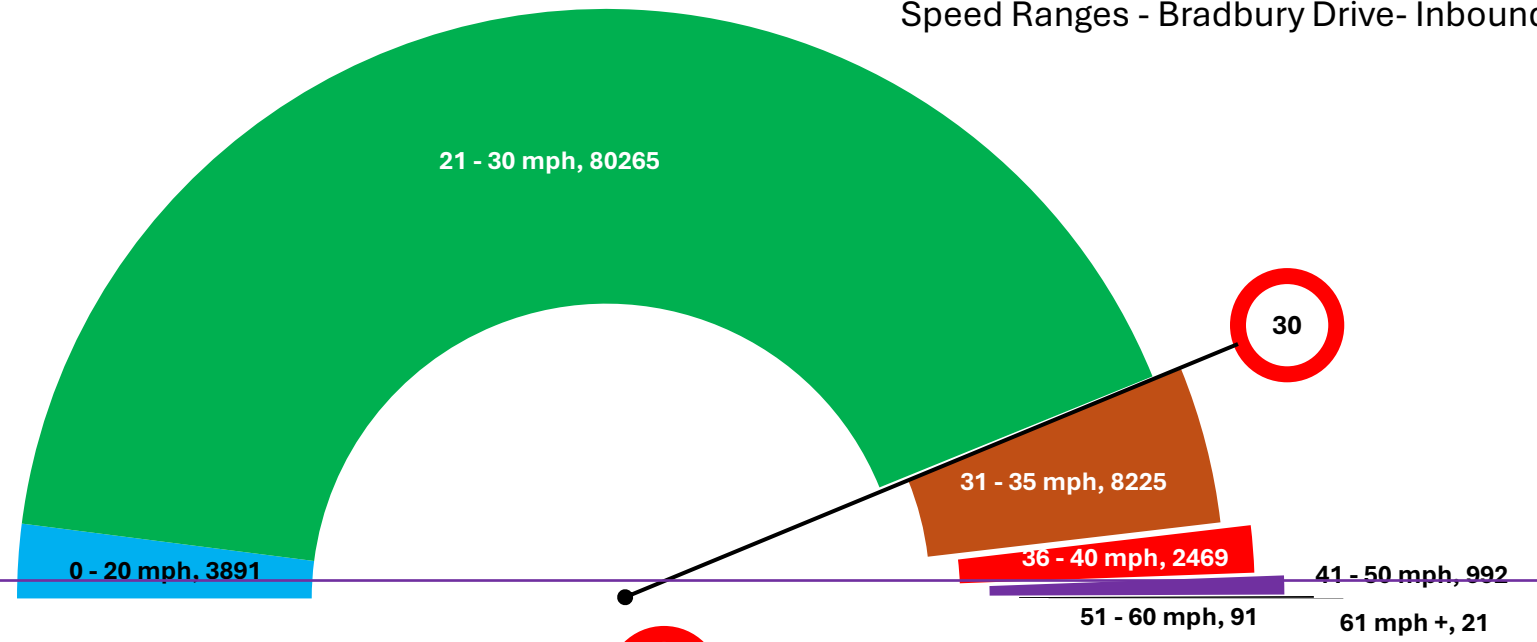
Leofric Close –
 Traffic volume
 + Average speed
 + 85% Percentile
 by hour of day
weekday



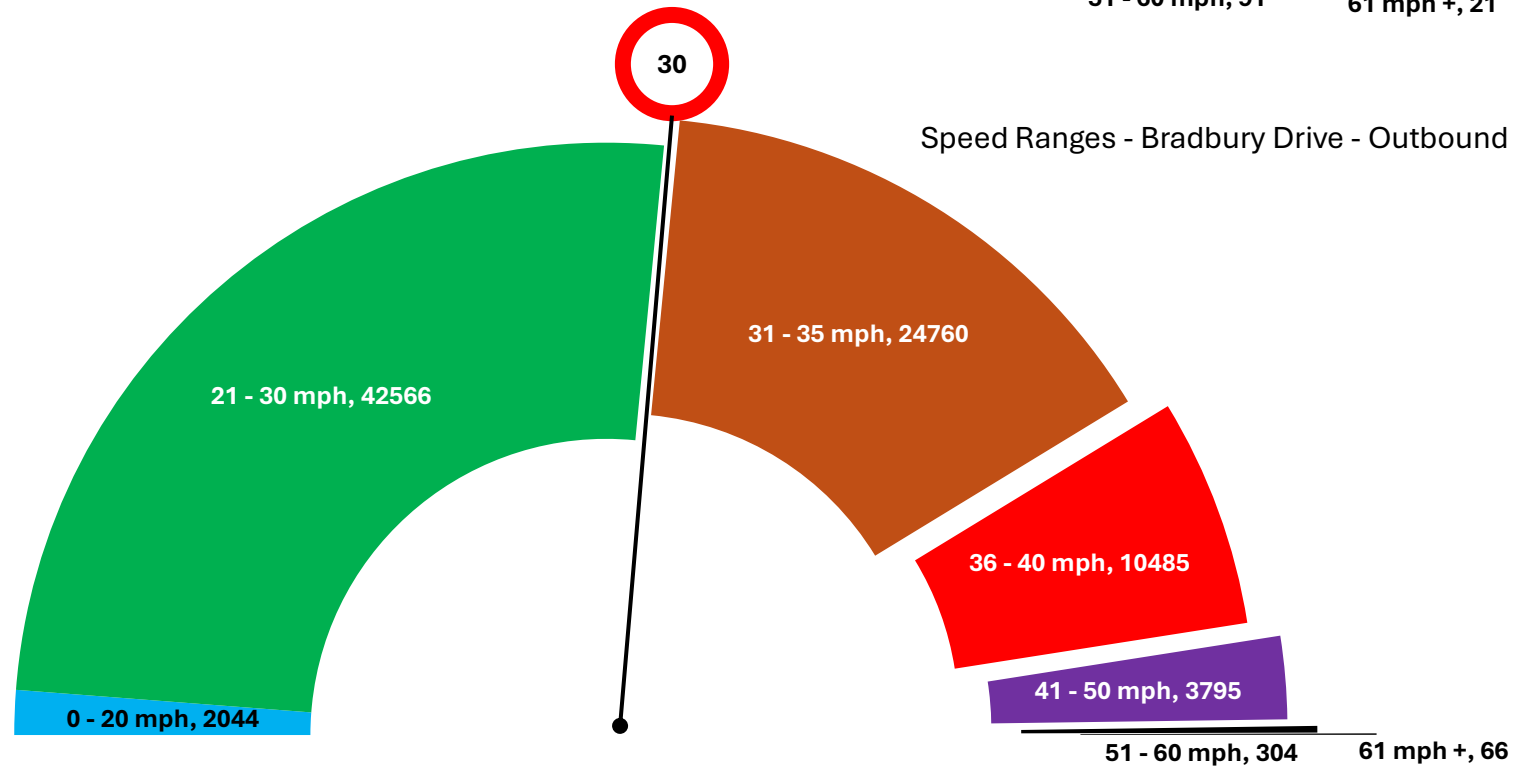
Leofric Close –
 Traffic volume
 + Average speed
 + 85% Percentile
 by hour of day
weekend



Speed Ranges - Bradbury Drive- Inbound



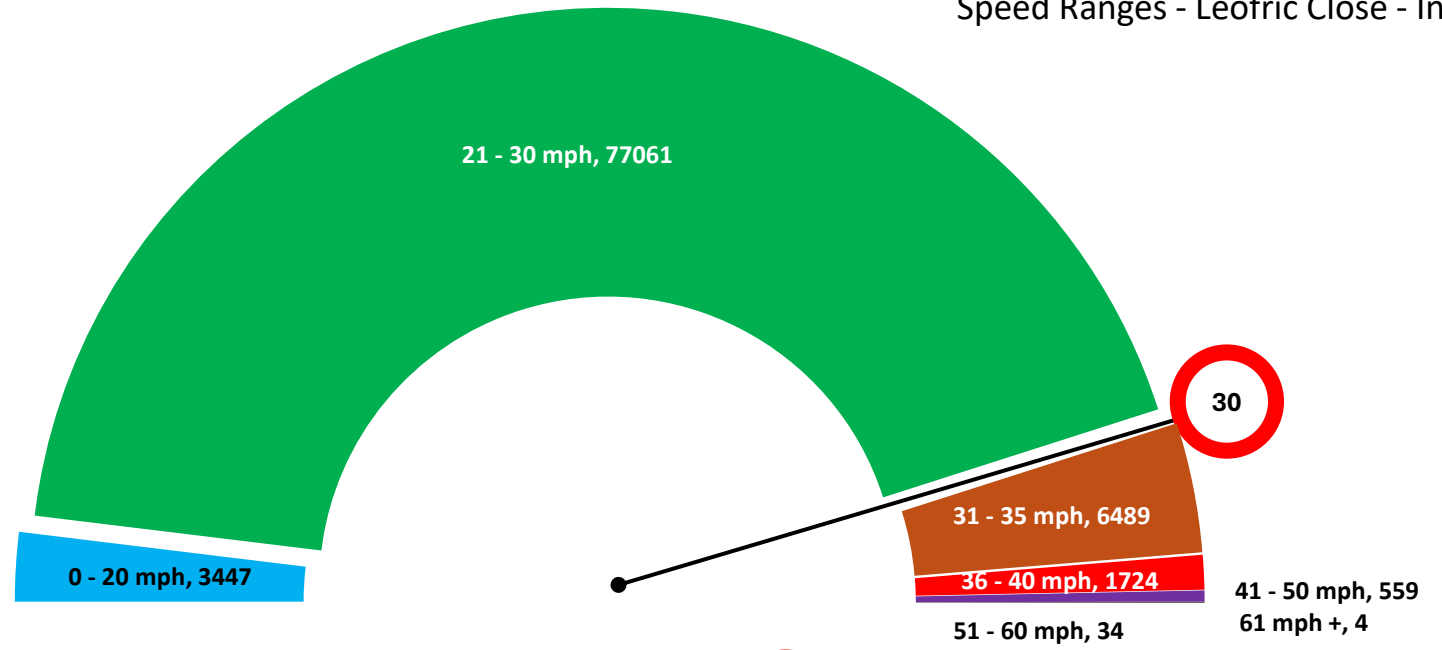
Speed Ranges - Bradbury Drive - Outbound



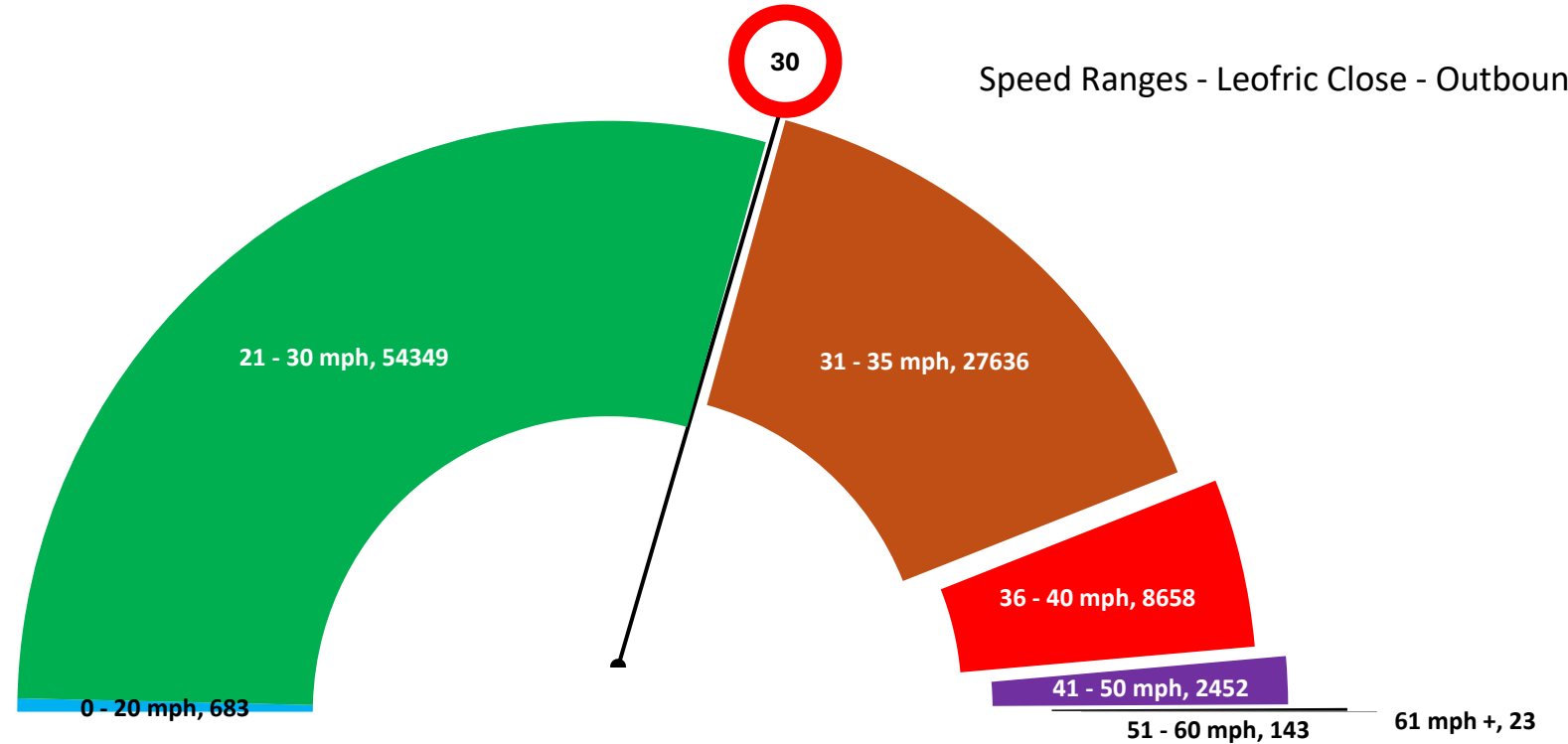
Bradbury Lane –
Number of vehicles per speed range

Leofric Close—
Number of
vehicles by
speed bracket

Speed Ranges - Leofric Close - Inbound

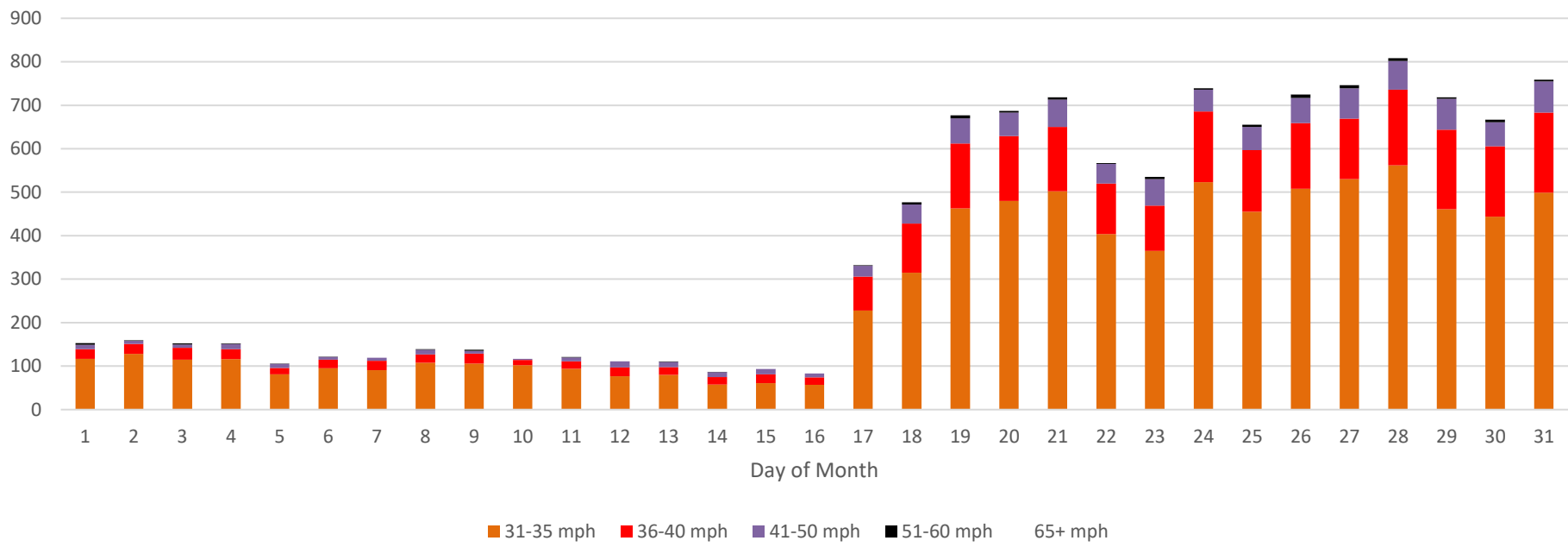


Speed Ranges - Leofric Close - Outbound

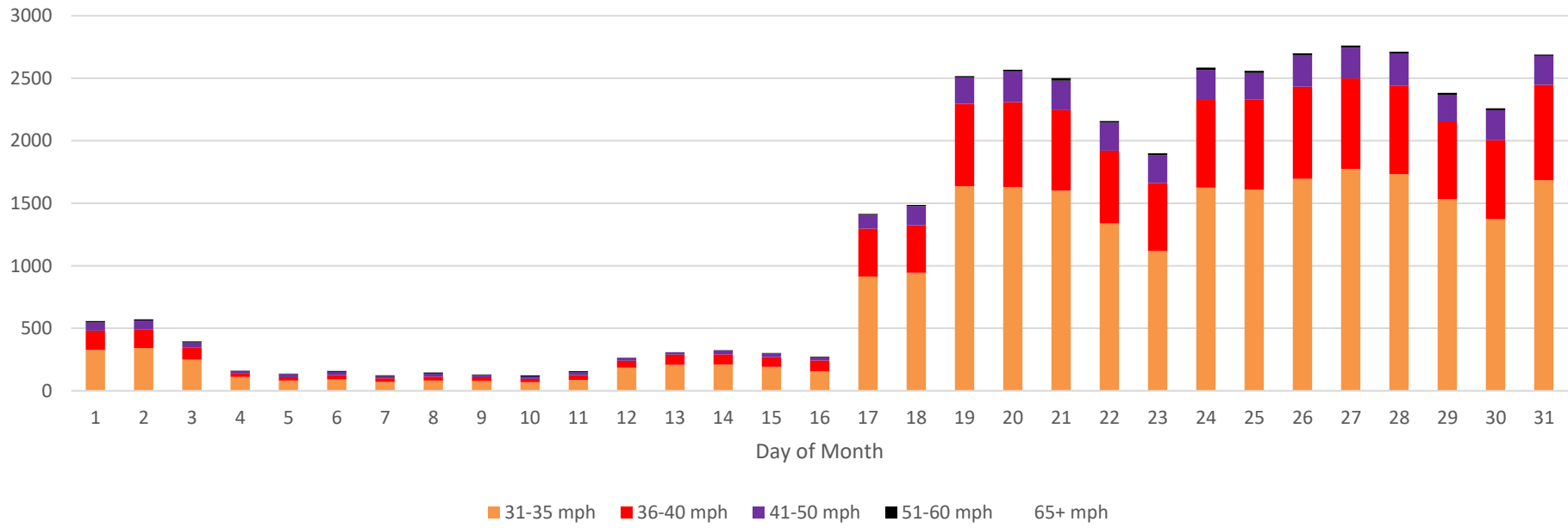


**Bradbury Lane
- Traffic Count
by Speed
Range and
Day of Month**

Bradbury Inbound - Daily Volume with Speed Groups - March 2025

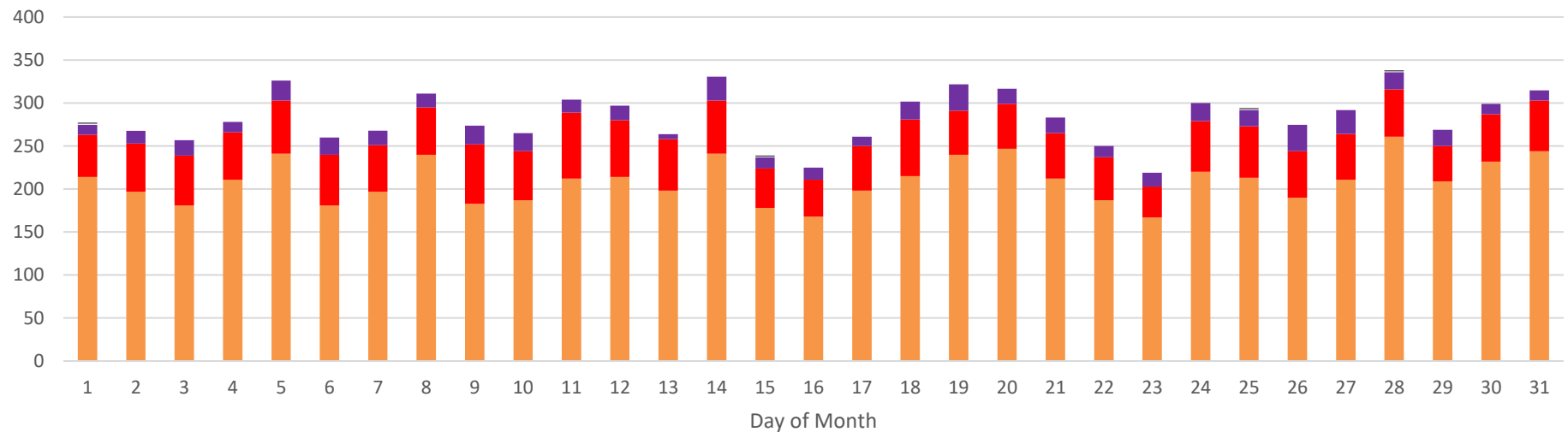


Bradbury Outbound - Daily Volume with Speed Groups - March 2025

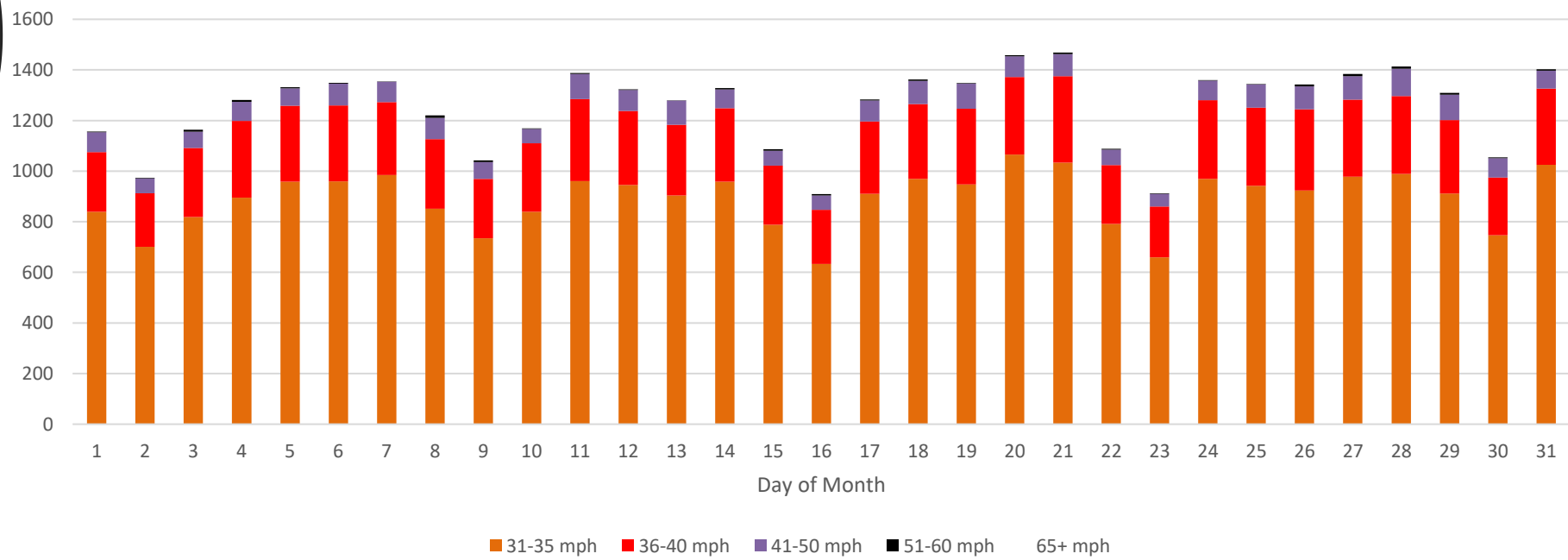


Leofric Close
- Traffic Count
by Speed
Range and
Day of Month

Leofrics Inbound - Daily Volume with Speed Groups - March 2025

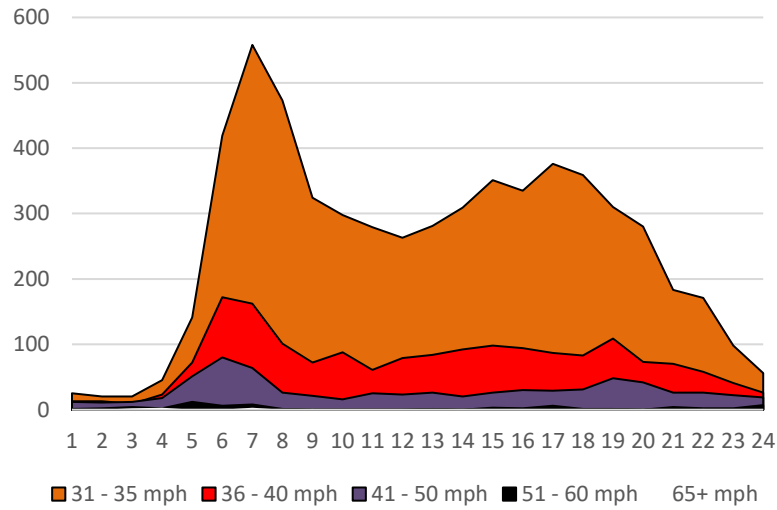


Leofrics Outbound - Daily Volume with Speed Groups - March 2025

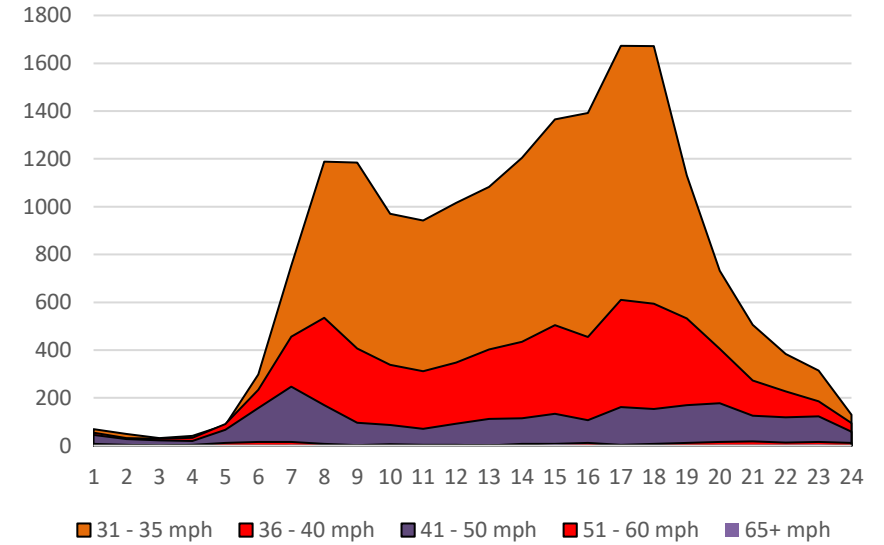


**Bradbury Lane
- Traffic Count by
Speed Range
(>31mph) and
Hour of day**

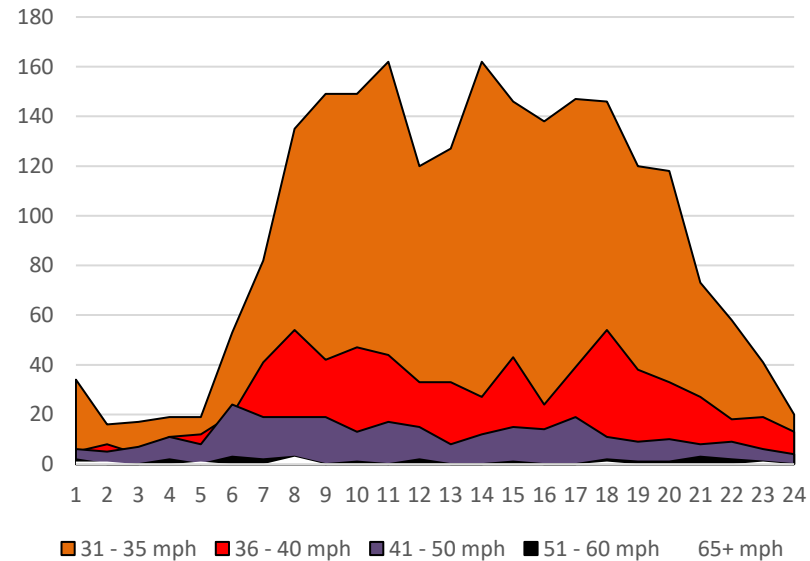
**Bradbury Inbound by Speed Groups -
Weekday**



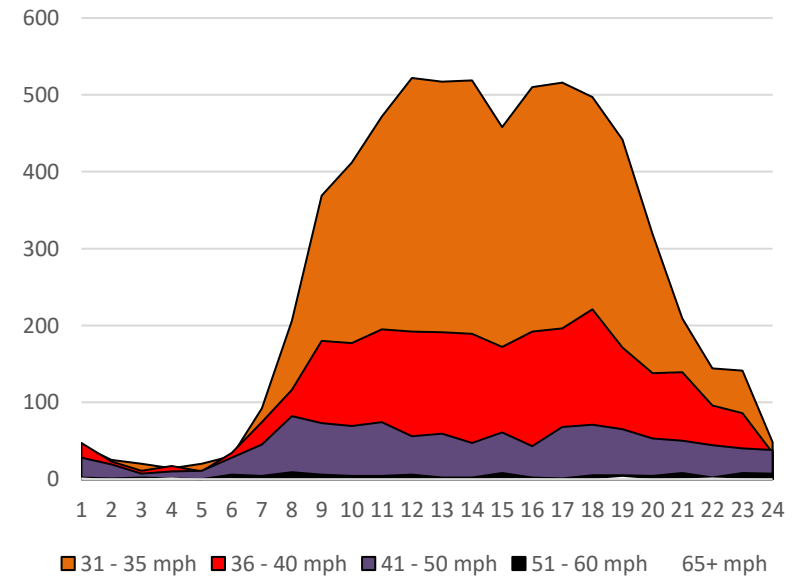
**Bradbury Outbound by Speed Groups -
Weekday**



**Bradbury Inbound by Speed Groups -
Weekend**

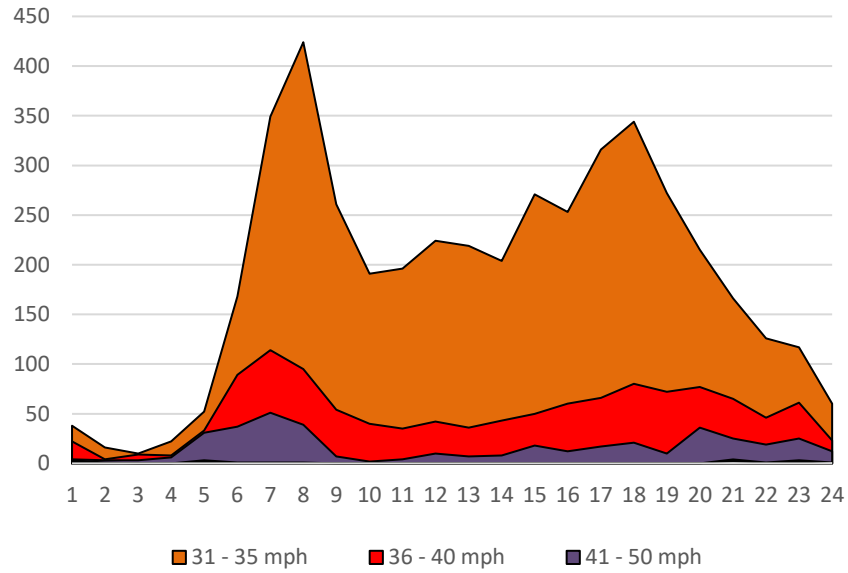


**Bradbury Outbound by Speed Groups -
Weekend**

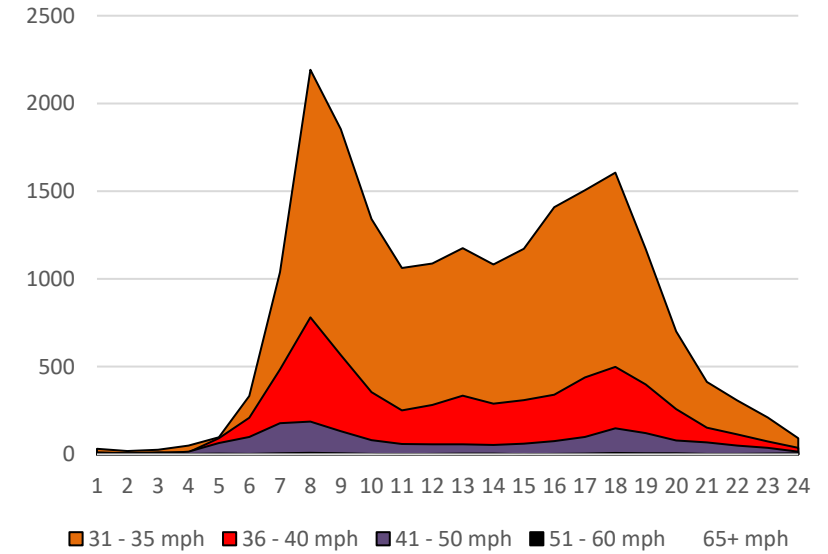


Leofric Close - Traffic Count by Speed Range and Hour of day

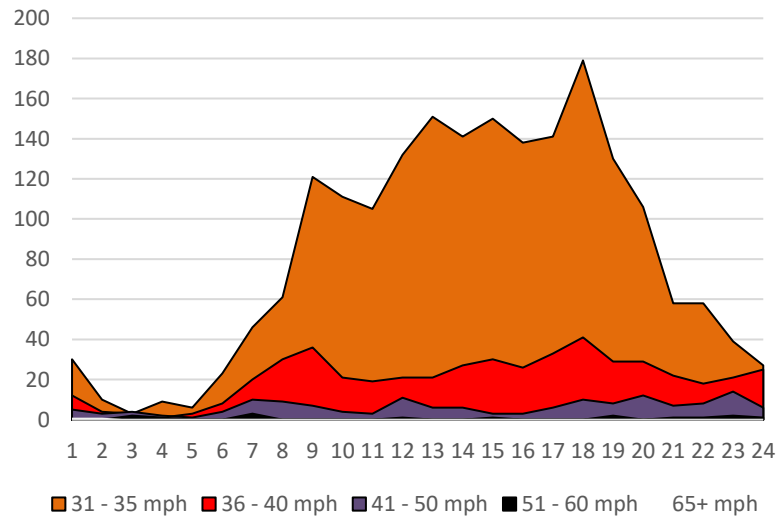
Leofric Inbound by Speed Groups - Weekday



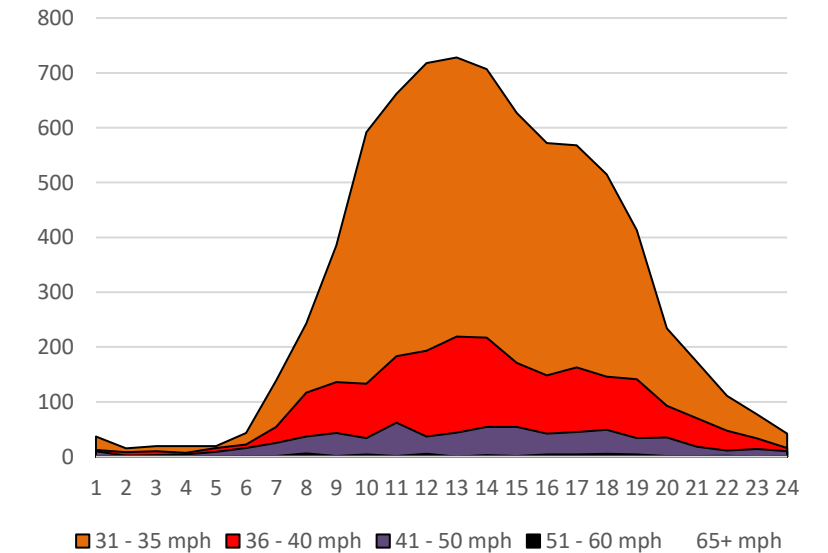
Leofric Outbound by Speed Groups - Weekday



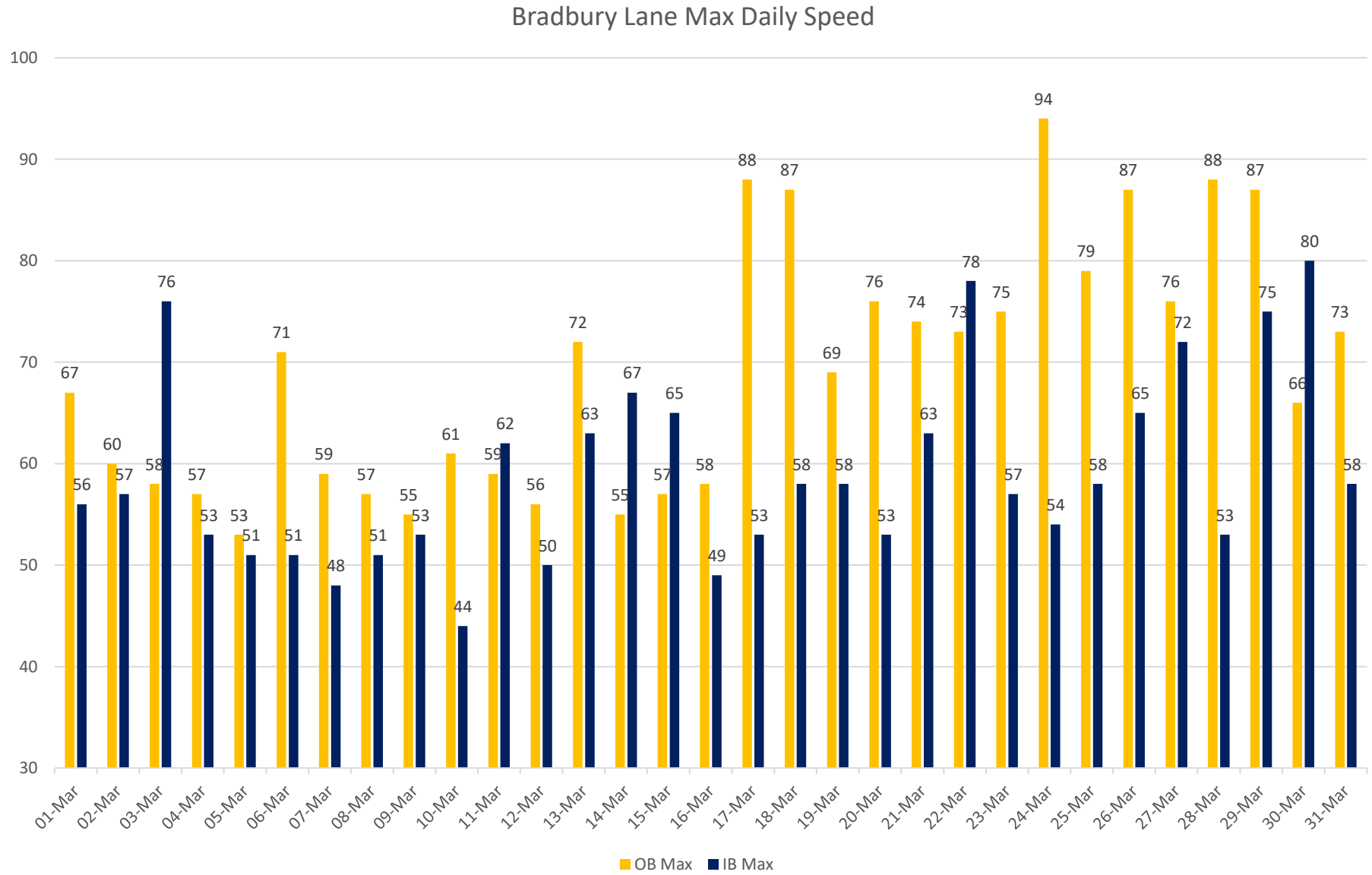
Leofric Inbound by Speed Groups - Weekend



Leofric Outbound by Speed Groups - Weekend



Bradbury Lane
- Max Speed
by
Day of Month



Leofric Close
- Max Speed
by
Day of Month

Leofric Close Max Daily Speed

