

Speed Indicator Report for Kings Bromley Parish Council March 2025

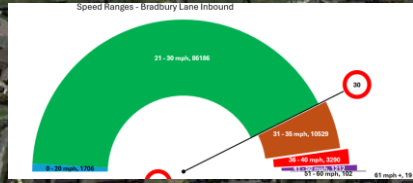
- The following pages provide analysis captured from Kings Bromley Speed Indicator Devices (SID)
- There are two SIDs in Kings Bromley on the A515 and they are located:
 - Opposite Bradbury Lane – Indicator board facing traffic into the village
 - Opposite Leofric Close – Indicator board facing traffic into the village
- The data was captured for every vehicle during the following period for February 2025 (accurate to each minute and +/- 1mph)
 - Bradbury Lane between 00:00 on 1st February 2025 to 23:59 28th February 2025
 - Leofric Close between 00:00 on 1st February 2025 to 23:59 28th February 2025



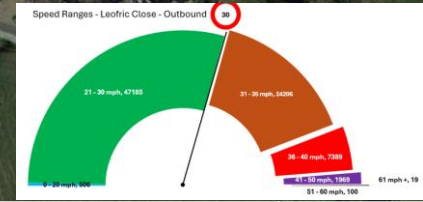
MONTHLY SUMMARY REPORT 1st to 28th February 2025

LICHFIELD

103,044
vehicles



Average speed	28 mph
Highest speed recorded	76 mph
Highest Speed hour of day	20:00 - 21:00
Busiest hour of day	07:00 - 08:00
Hour of day with highest average speed	02:00 - 03:00
Vehicles over 36mph	4,623



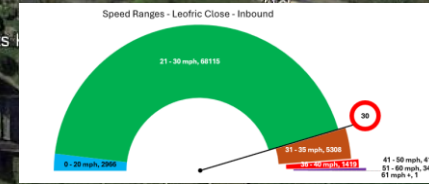
Average speed	31 mph
Highest speed recorded	96 mph
Highest Speed hour of day	17:00 - 18:00
Busiest hour of day	16:00 - 17:00
Hour of day with highest average speed	05:00 - 06:00
Vehicles over 36mph	9,477

81,374
vehicles

106,944
vehicles



Average speed	33 mph
Highest speed recorded	104 mph
Highest Speed hour of day	13:00 - 14:00
Busiest hour of day	16:00 - 17:00
Hour of day with highest average speed	04:00 - 05:00
Vehicles over 36mph	21,182



Average speed	26 mph
Highest speed recorded	61 mph
Highest Speed hour of day	20:00 - 21:00
Busiest hour of day	16:00 - 17:00
Hour of day with highest average speed	04:00 - 05:00
Vehicles over 36mph	1,868

78,257
vehicles

YOXALL

Summary Report Conclusions

Vehicle Count Bradbury lane		
Speed Bracket	Inbound	Outbound
0-20	1,706	927
21-30	86,186	49,791
31-35	10,529	35,044
36-40	3,290	15,414
41-50	1,212	5,226
51-60	102	435
>60	19	107
Totals	103,044	106,944

Vehicle Count Leofric Close		
Speed Bracket	Inbound	Outbound
0-20	2,966	506
21-30	68,115	47,185
31-35	5,308	24,206
36-40	1,419	7,389
41-50	414	1,969
51-60	34	100
>60	1	19
Totals	78,257	81,374

Law Enforcement Requirement	Inbound	Outbound	Category
Compliant	87,892	50,718	-
Non-Compliant Warning/Fine	10,529	35,044	Band A Fine
Non-Compliant Fixed Penalty	3,290	15,414	Band B Fine
Non-Compliant Ban	1,333	5,768	Band C Fine
Total Law Enforcement Required	15,152	56,226	

Law Enforcement Requirement	Inbound	Outbound	Category
Compliant	71,081	47,691	-
Non-Compliant Warning/Fine	5,308	24,206	Band A Fine
Non-Compliant Fixed Penalty	1,419	7,389	Band B Fine
Non-Compliant Ban	449	2,088	Band C Fine
Total Law Enforcement Required	7,176	33,683	

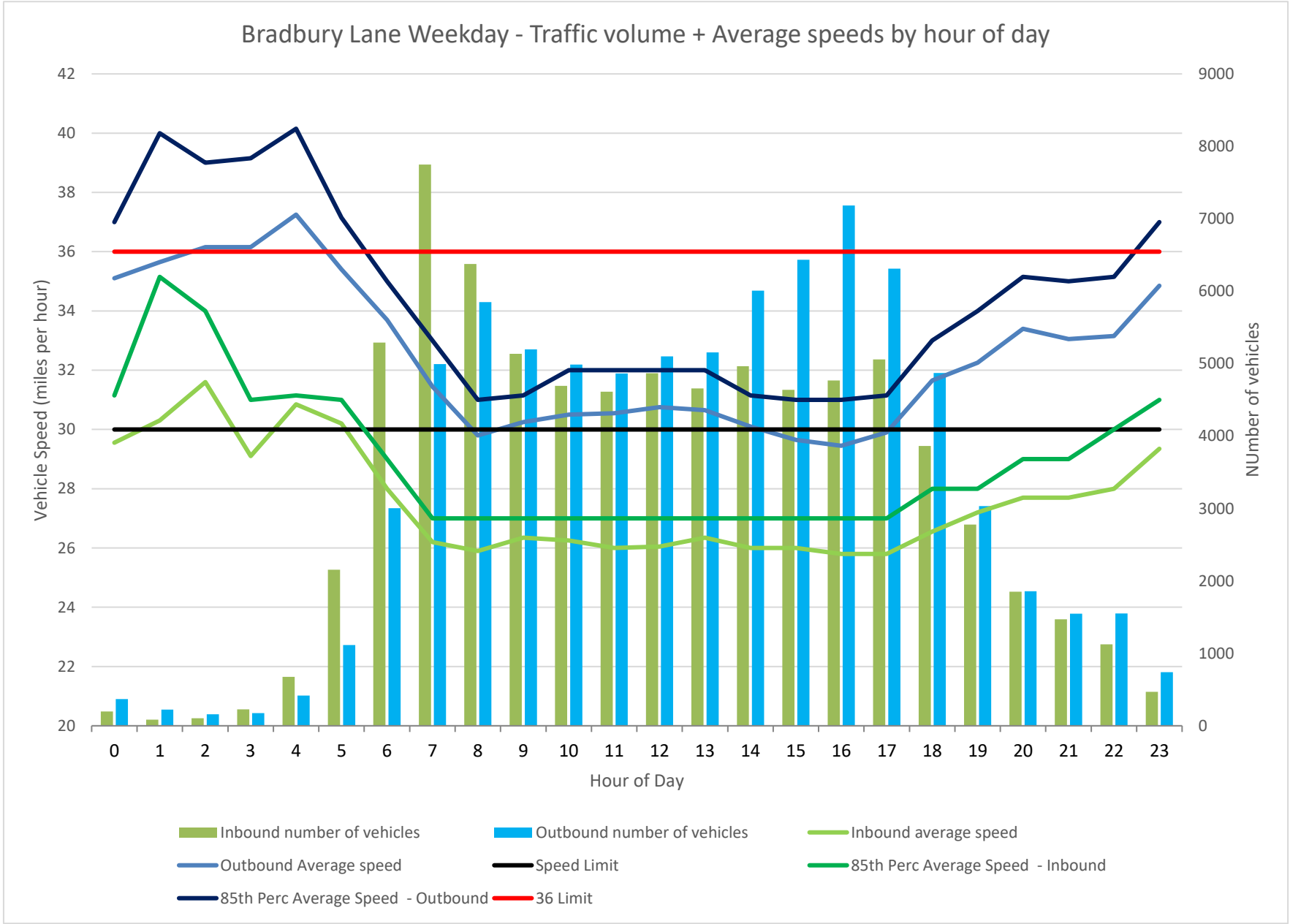
General notes when viewing the detailed charts below:

1. The SIDs are set to record every vehicle's speed (mph) and corresponding time of day (nearest minute) for both inbound (towards the SID) and outbound (away from the SID) traffic detected from up to 250 m away (Bradbury Lane) and 150 m (Leofric Close).
2. The individual vehicle speeds recorded are the average speed for each vehicle over these distance at 1.2 second intervals.
3. The recorded speeds are accurate to +/- 1mph, using a Doppler radar inside the SID.

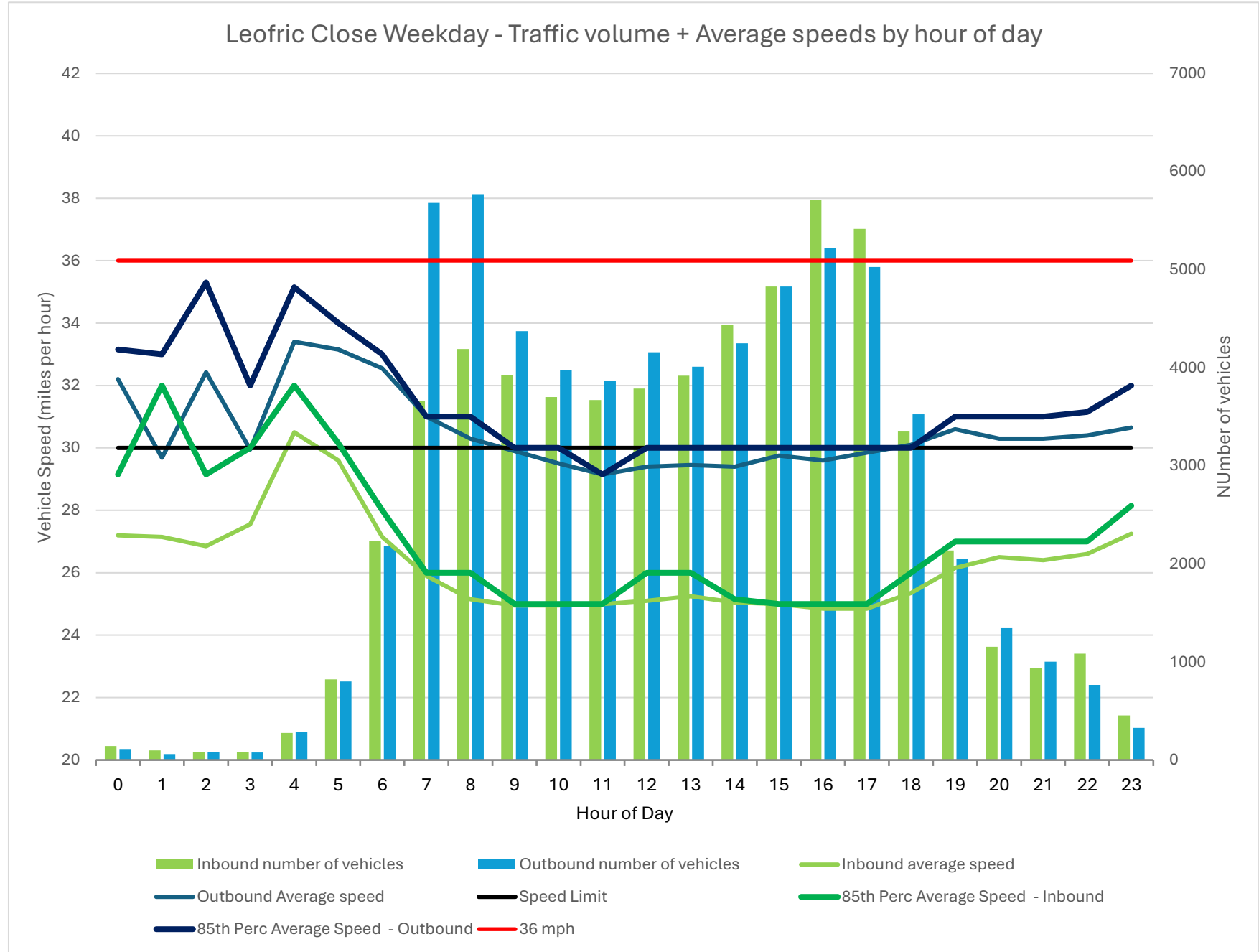
The next four slides show the charts, often provided by Highways Departments, indicate the level of compliance exhibited by drivers to the speed limit set for the section of road monitored (in this case 30 mph).

1. These charts illustrate inbound and outbound traffic data over 24 hours during weekdays (1 and 2) and weekends (3 and 4) for: volume of traffic, the average speed of all traffic and 85 % percentile speeds (85 % of vehicles recorded below & 15% above the line)
2. The **black horizontal line** shows the legal speed limit, the **red horizontal line** shows the law enforceable lower speed limit.

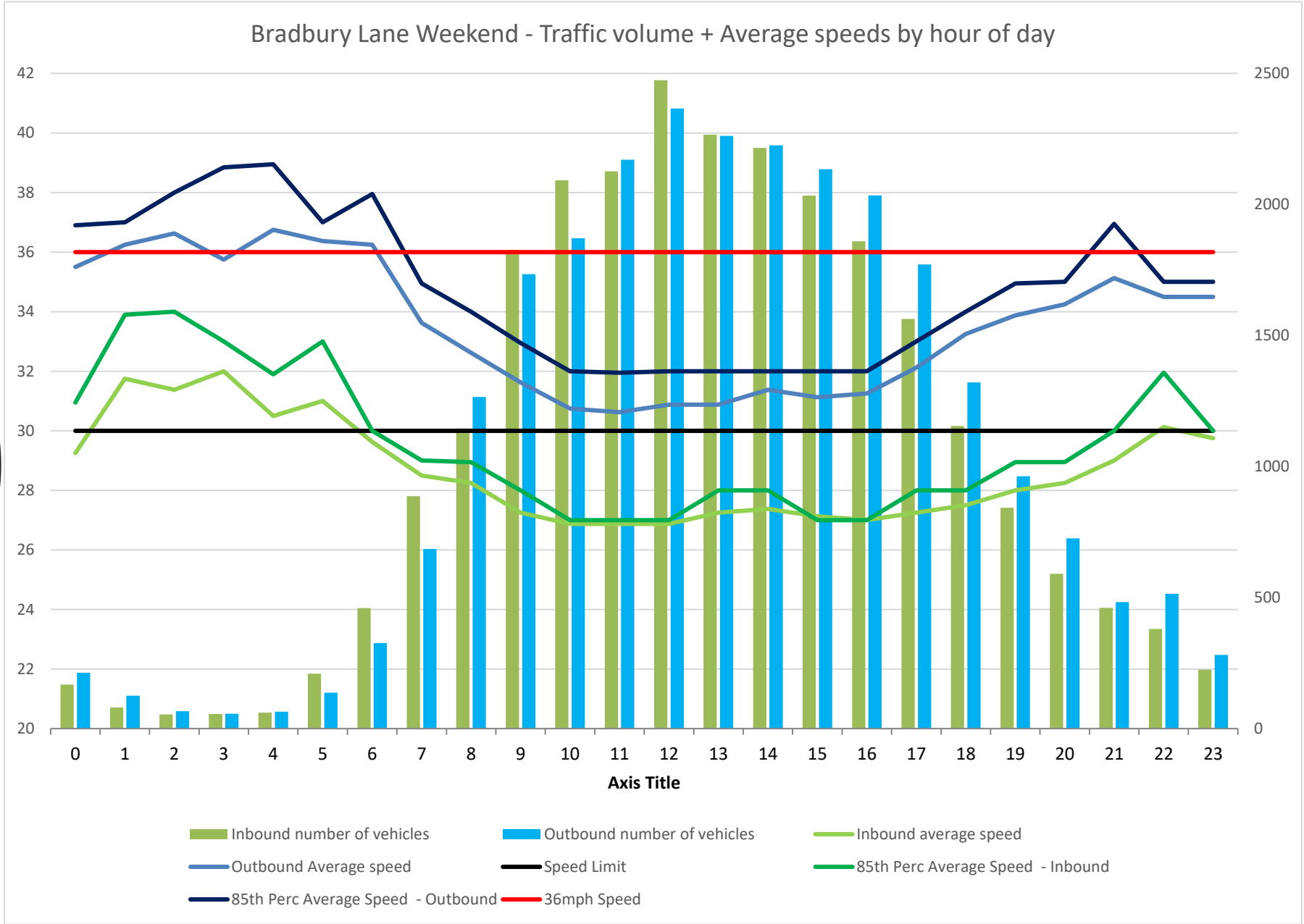
**Bradbury Lane –
Traffic volume
+ Average speed
+85% Percentile
by hour of day
weekday**



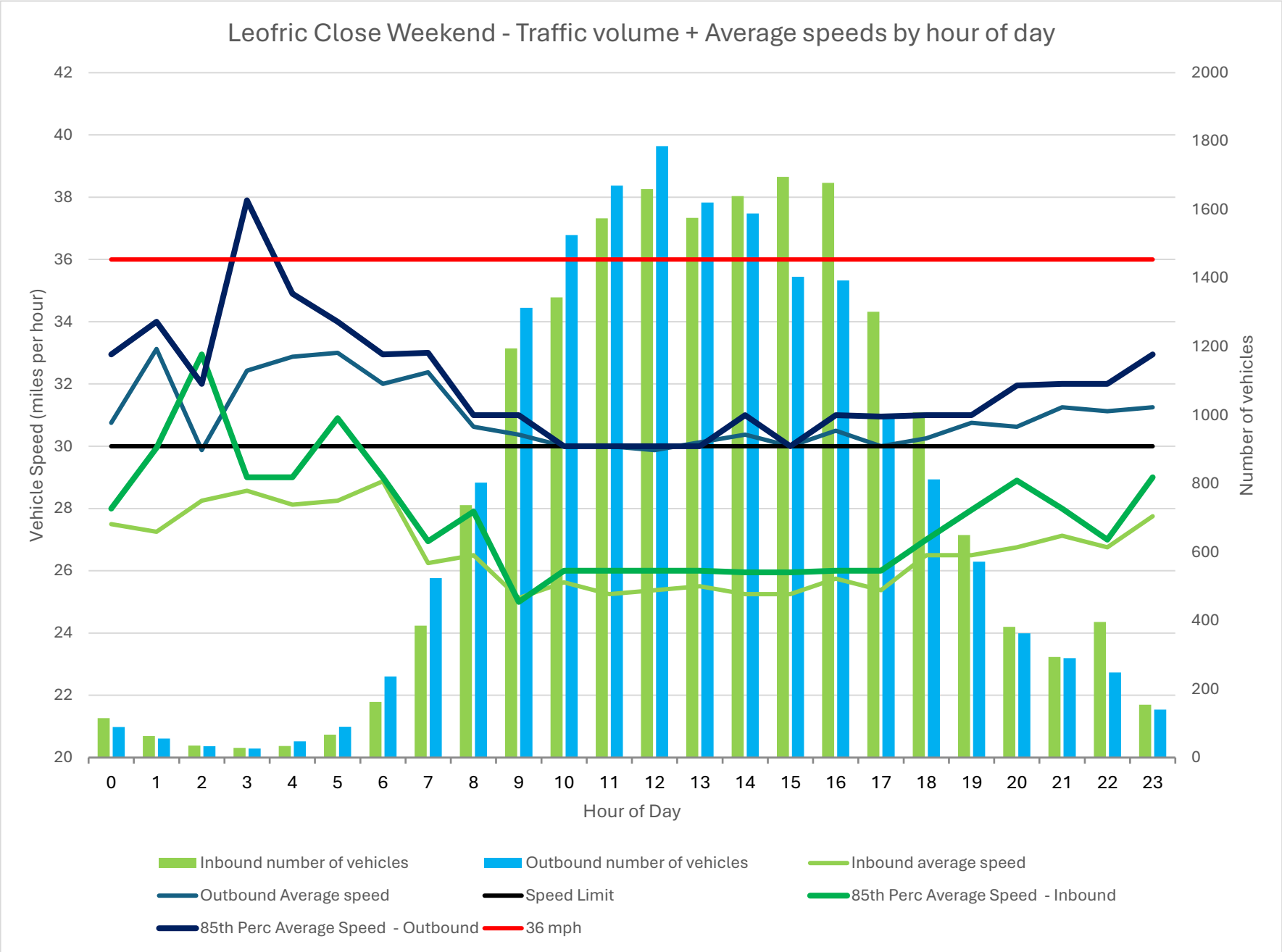
Leofric Close –
 Traffic volume
 + Average speed
 + 85% Percentile
 by hour of day
weekday










Bradbury Lane –
 Traffic volume
 + Average speed
 +85% Percentile
 by hour of day
weekend



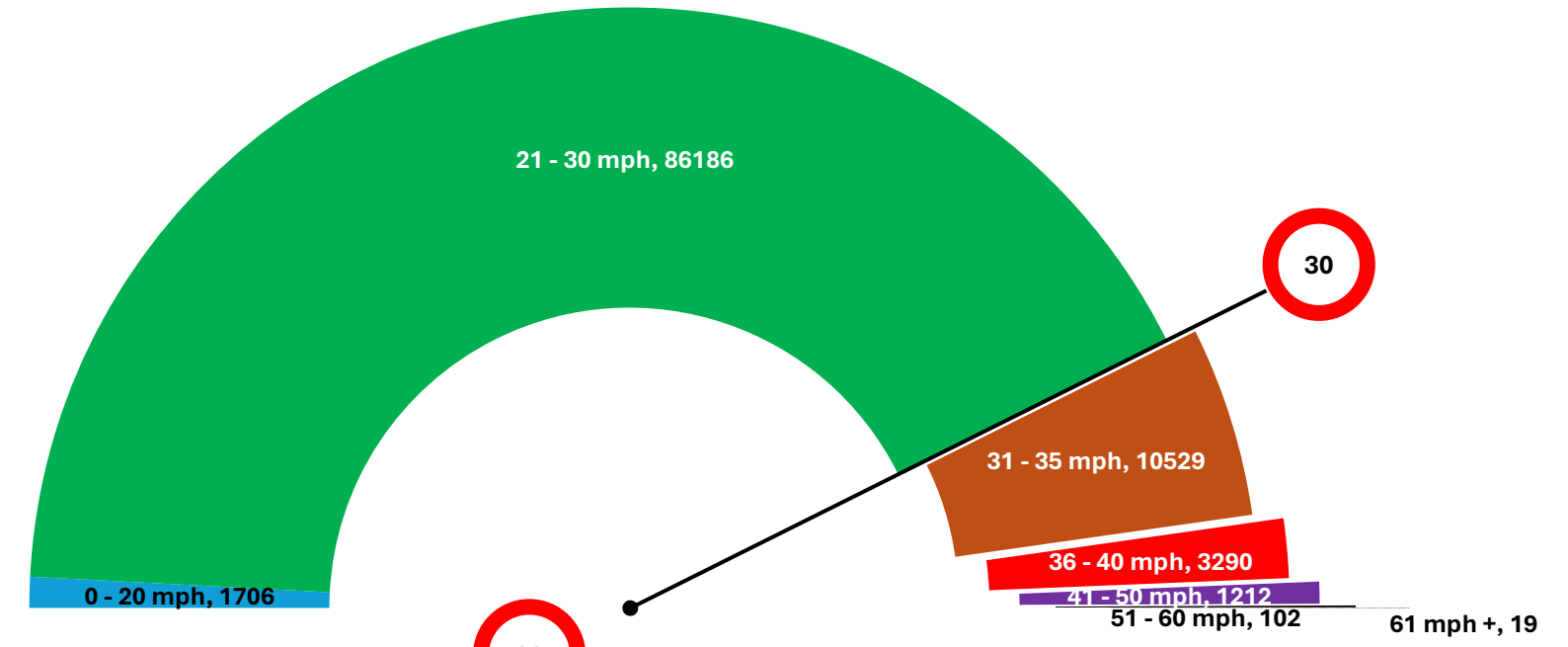
Leofric Close –
 Traffic volume
 + Average speed
 + 85% Percentile
 by hour of day
weekend



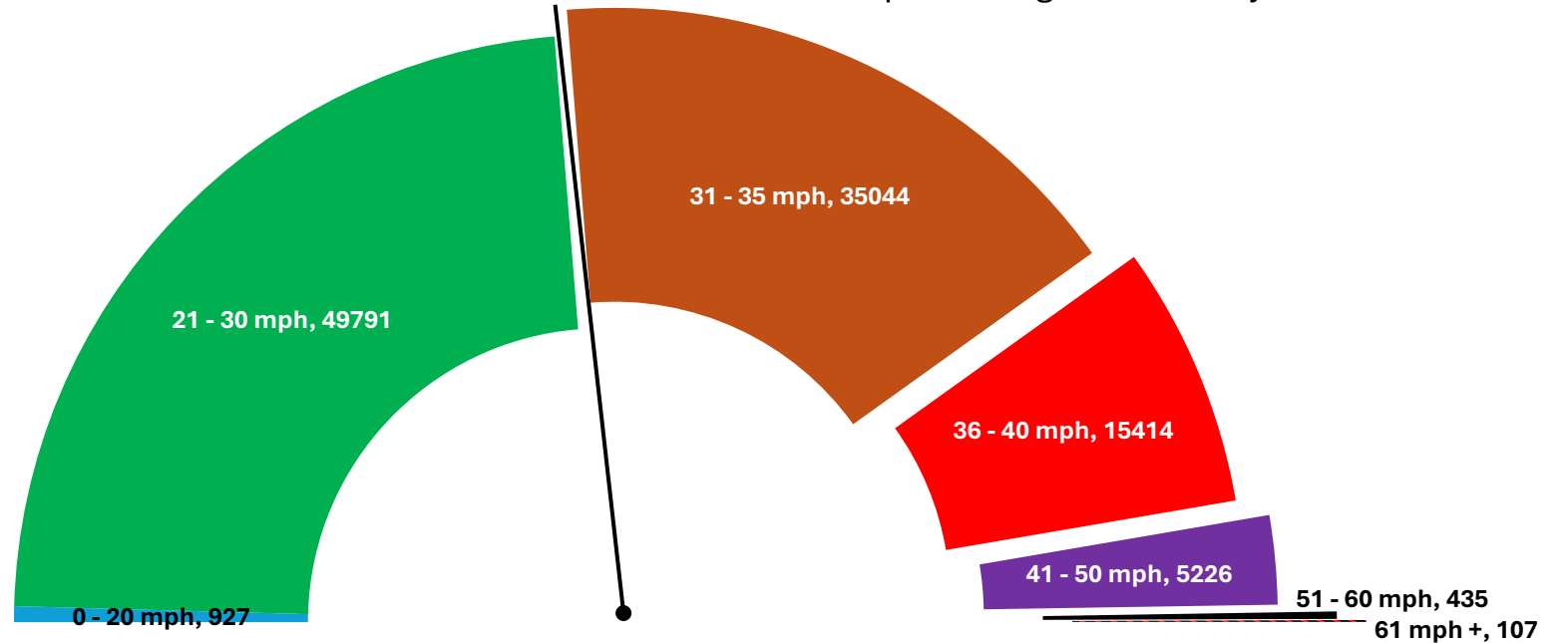
The next two slides illustrate the total quantity of drivers driving within the following speed brackets during the whole month of January. We have used a speedometer graphic to ease visual comparison and included the legal limit marker.

1.  0 - 20mph (of interest during school times)
2.  21-30 mph (fully compliant drivers)
3.  31-35 mph (outside of legal limit but not enforceable)
4.  36 - 40 mph (enforceable)
5.  41- 50 mph (enforceable and possible licence withdrawal)
6.  51- 60 mph (enforceable and probable licence withdrawal)
7.  61 mph and above! (possible imprisonment)

Speed Ranges - Bradbury Lane Inbound



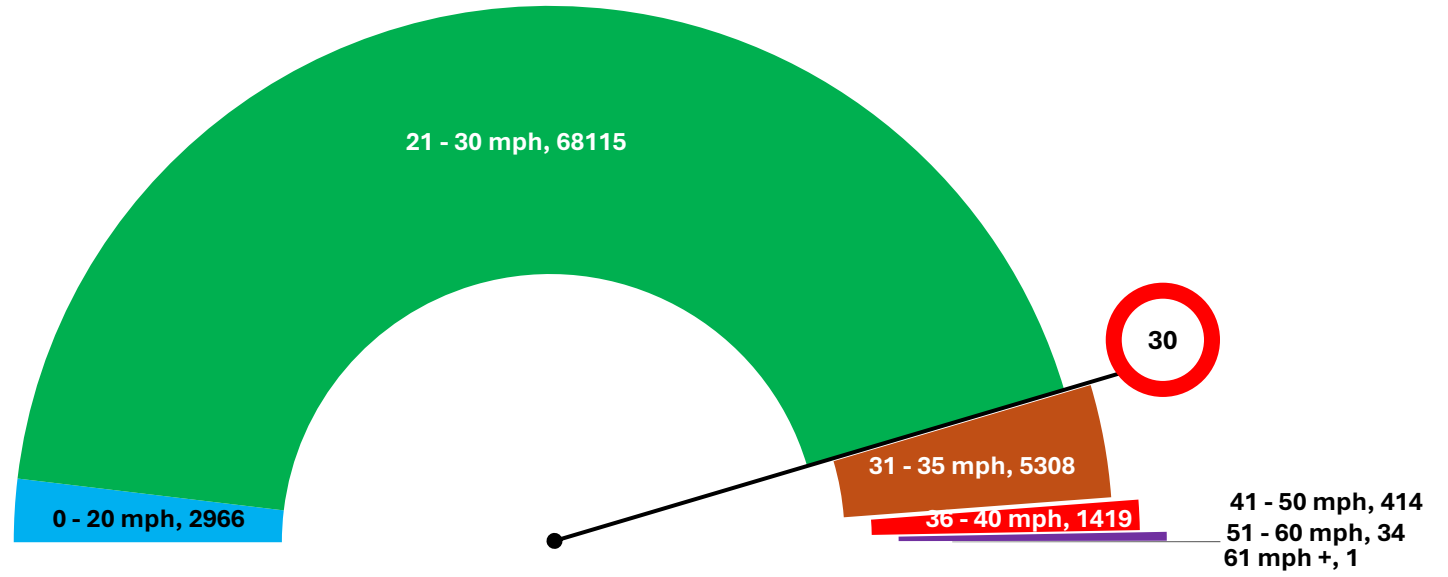
Speed Ranges - Bradbury Lane - Outbound



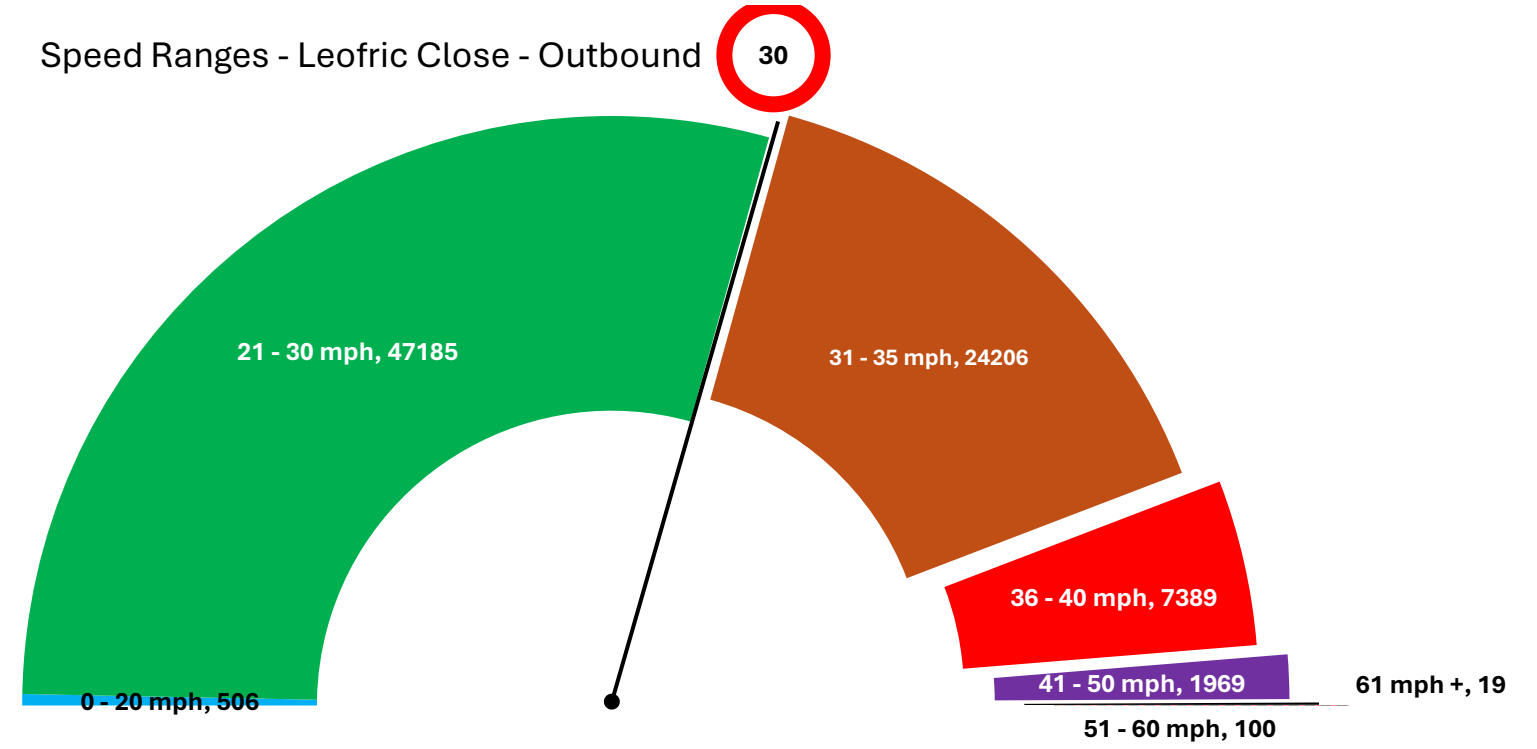
Bradbury Lane – Number of vehicles per speed range

Leofric Close -
Number of
vehicles by
speed bracket

Speed Ranges - Leofric Close - Inbound



Speed Ranges - Leofric Close - Outbound



The next four slides illustrate the daily (1 and 2) and hourly (3 and 4) breakdown of all traffic exceeding the 31 mph enforceable limit illustrated by colour bands.

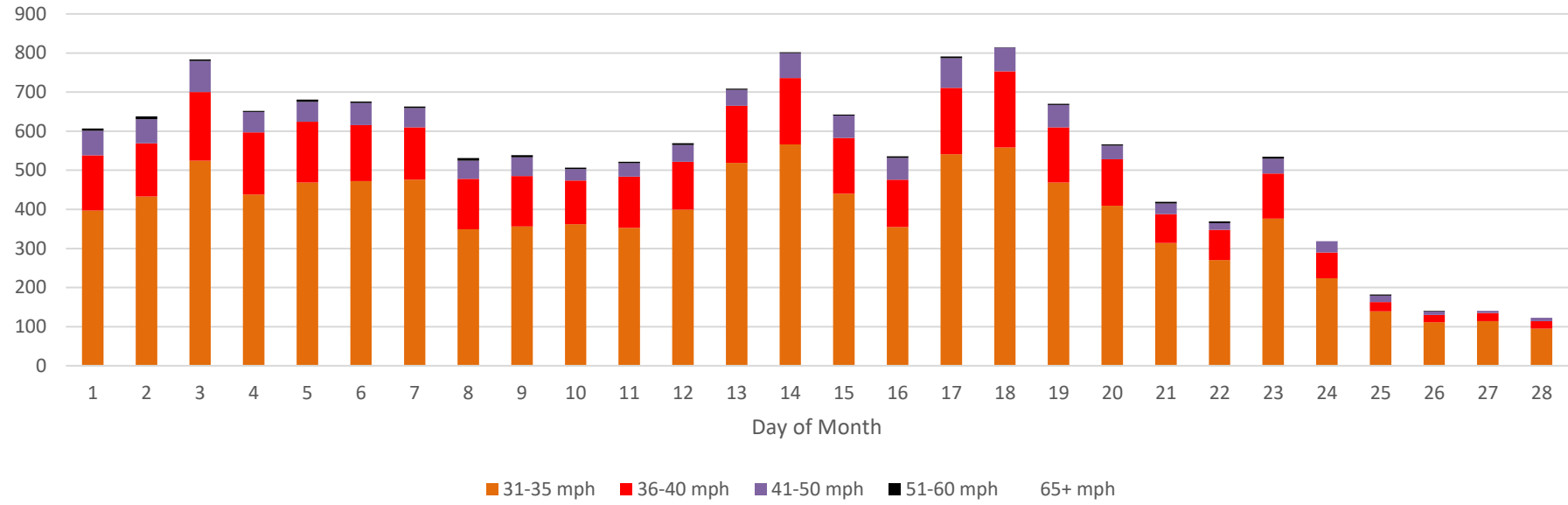
The final two graphics in this set shows the maximum recorded speeds every day at both SIDs

Bear the following sentencing guidelines in mind when viewing the next four charts:

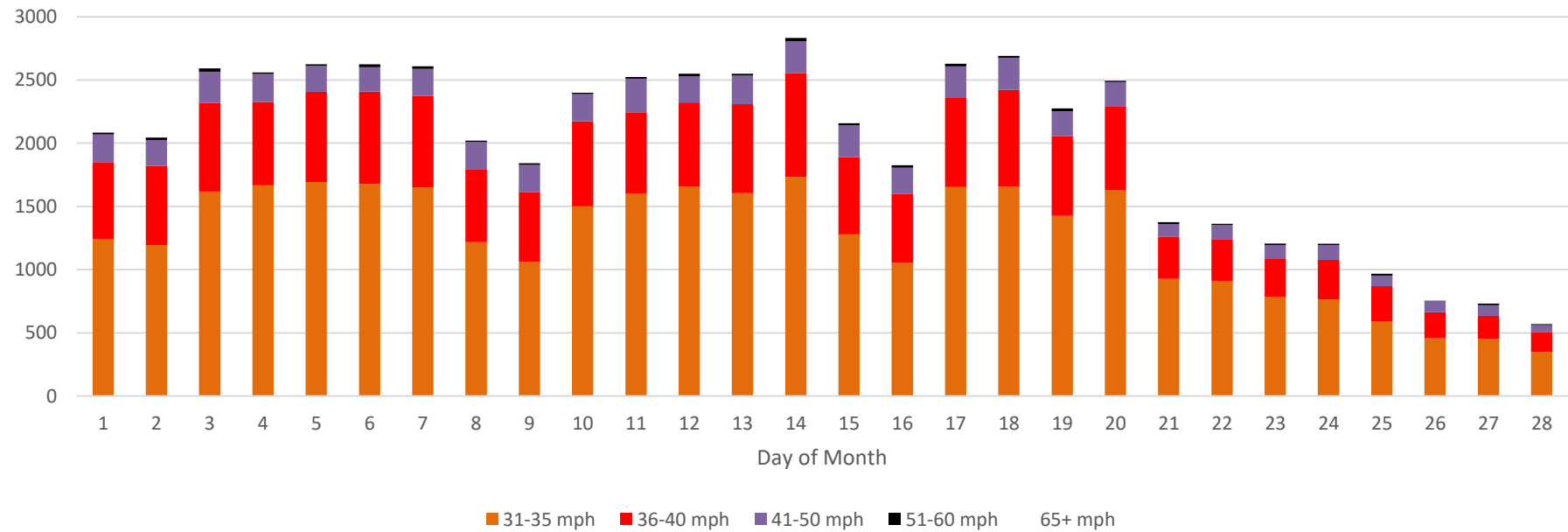
Speed Limit (30 mph)	Recorded Speed (mph)		
	31-35	36-40	41-50
Sentencing Range	Band A fine		Band B fine
Points / Disqualification	3 points		Disqualify 7 – 28 days OR 4 – 6 points
	51 and Above		
	Band C Fine		
	Disqualify 7 – 56 days OR 6 points		

**Bradbury Lane
- Traffic Count
by Speed
Range and
Day of Month**

Bradbury Inbound - Daily Volume with Speed Groups - February 2025

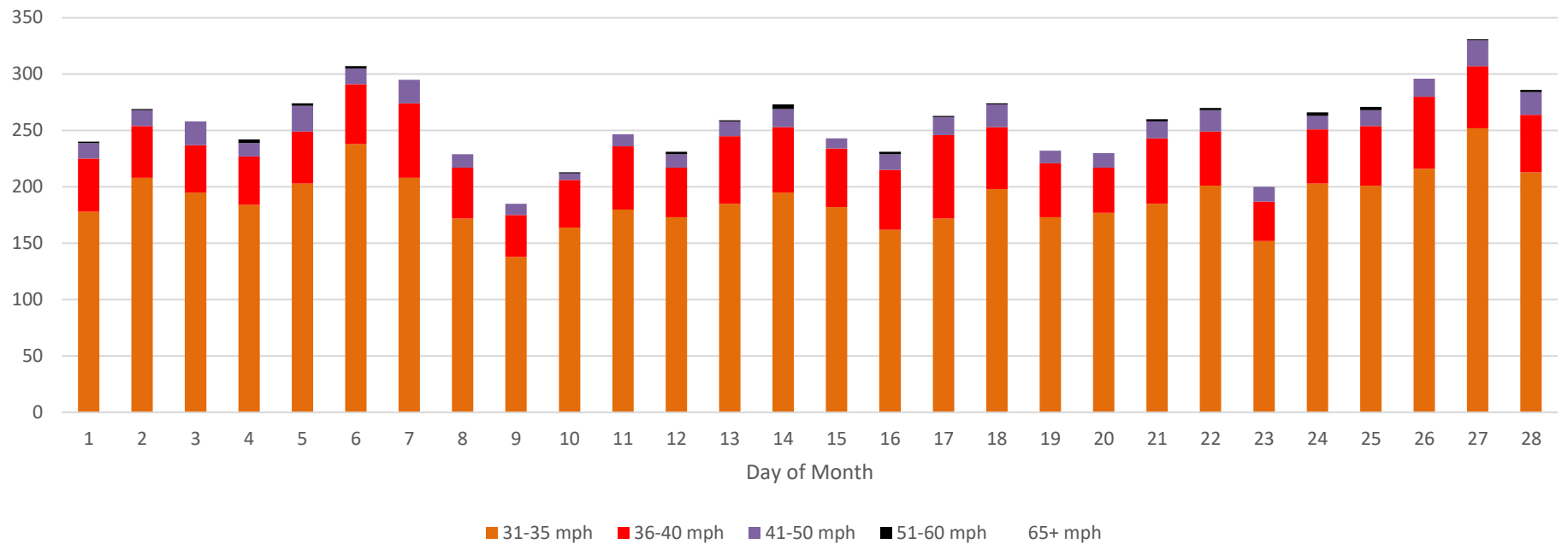


Bradbury Outbound - Daily Volume with Speed Groups - February 2025

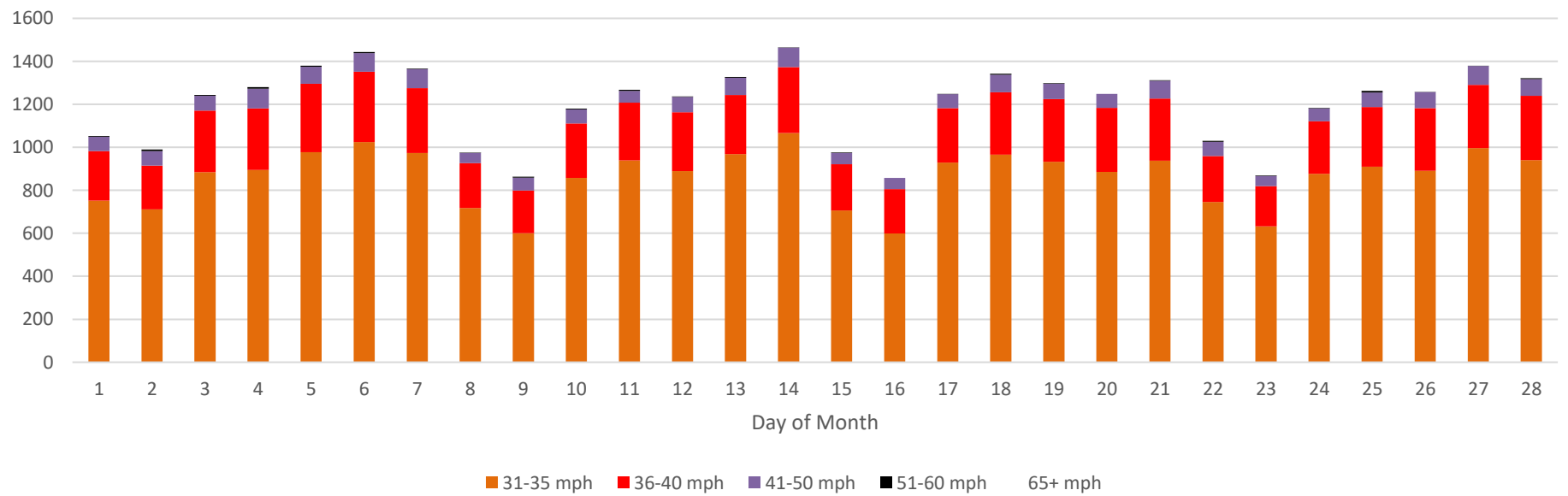


Leofric Close
 - Traffic Count
 by Speed
 Range and
 Day of Month

Leofric Inbound - Daily Volume with Speed Groups - February 2025

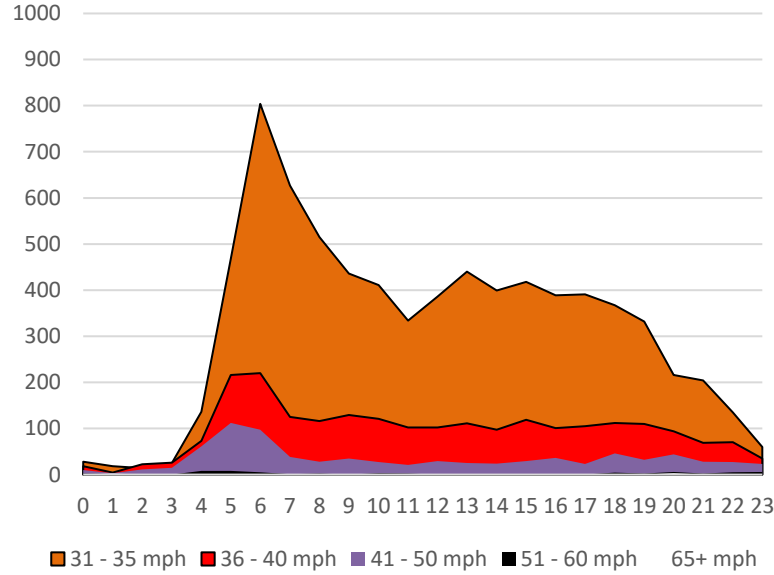


Leofric Outbound - Daily Volume with Speed Groups - February 2025

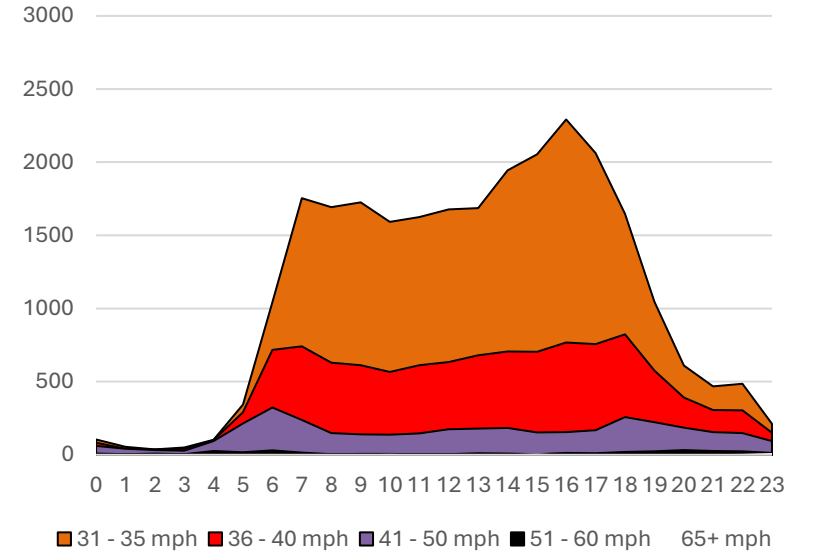


**Bradbury Lane
- Traffic Count by
Speed Range
(>31mph) and
Hour of day**

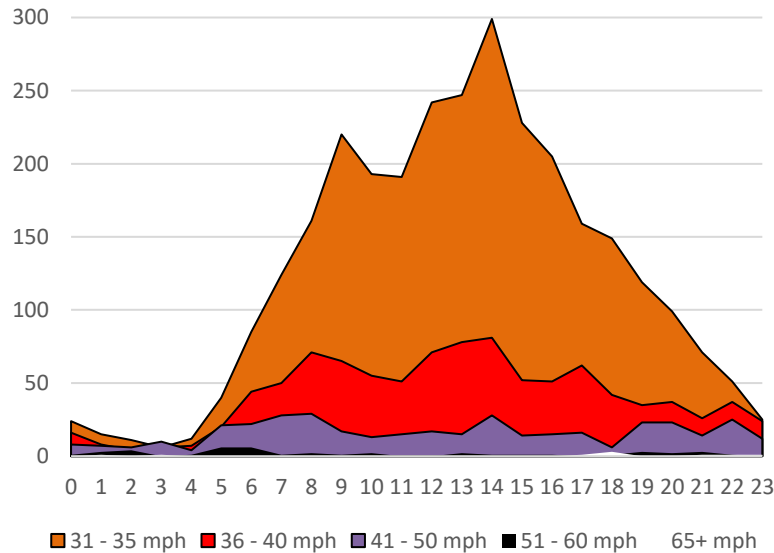
**Bradbury Inbound by Speed Groups -
Weekday**



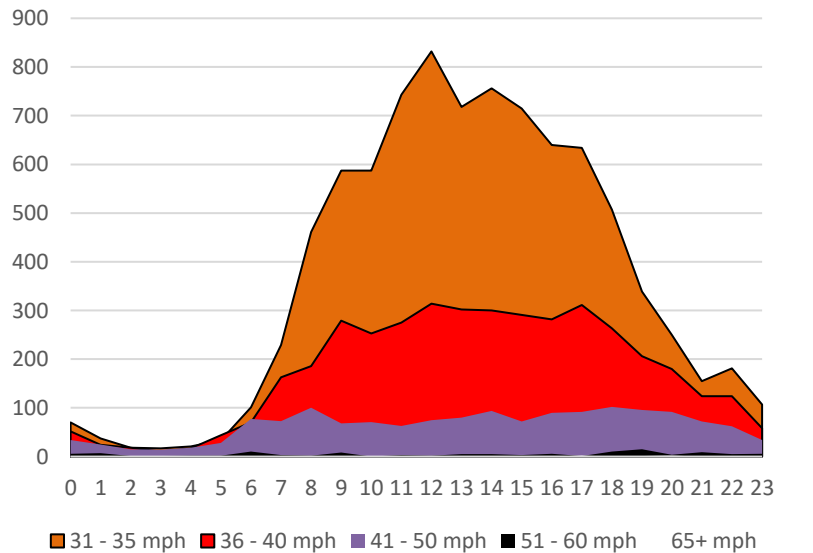
**Bradbury Outbound by Speed Groups -
Weekday**



**Bradbury Inbound by Speed Groups -
Weekend**

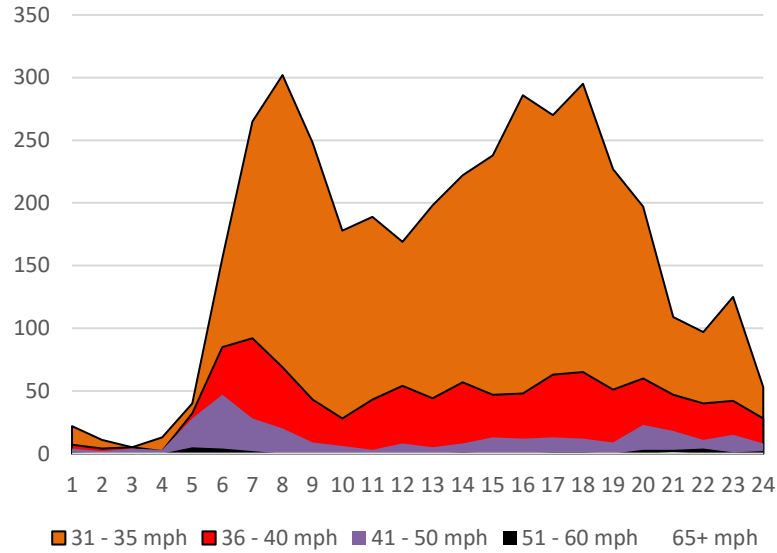


**Bradbury Outbound by Speed Groups -
Weekend**

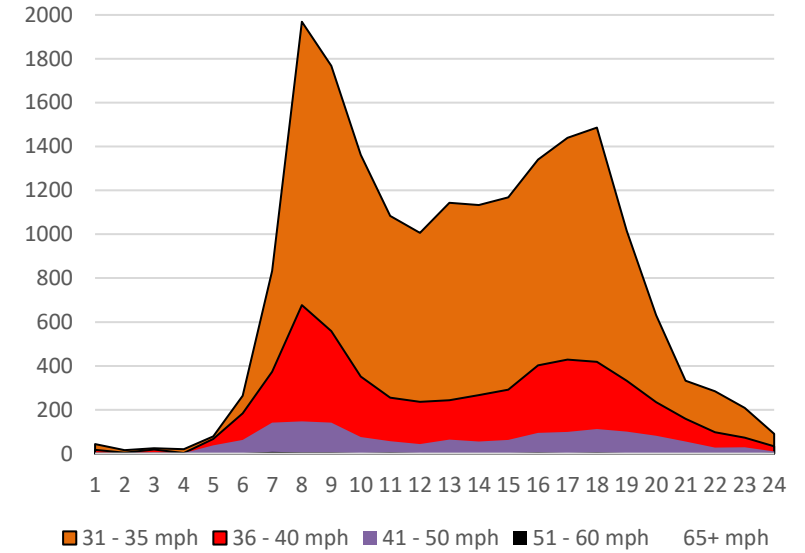


Leofric Close
- Traffic Count
by Speed
Range and
Hour of day

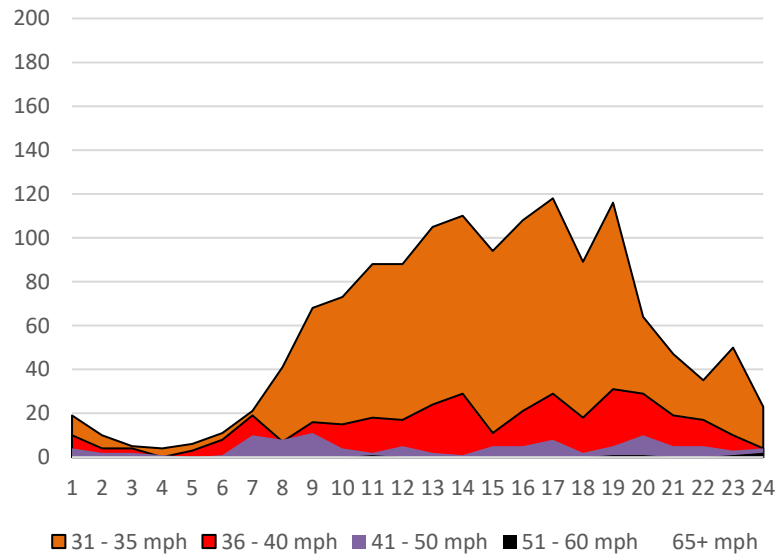
Leofric Inbound by Speed Groups -
Weekday



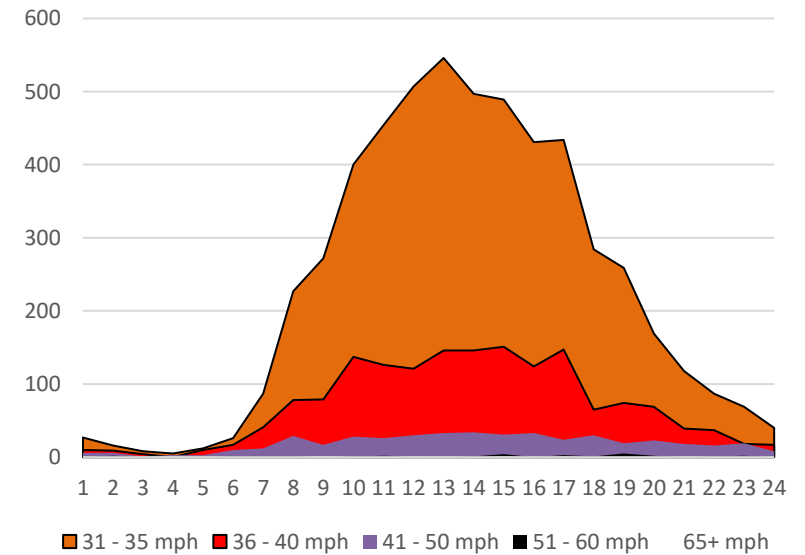
Leofric Outbound by Speed Groups -
Weekday



Leofric Inbound by Speed Groups -
Weekend

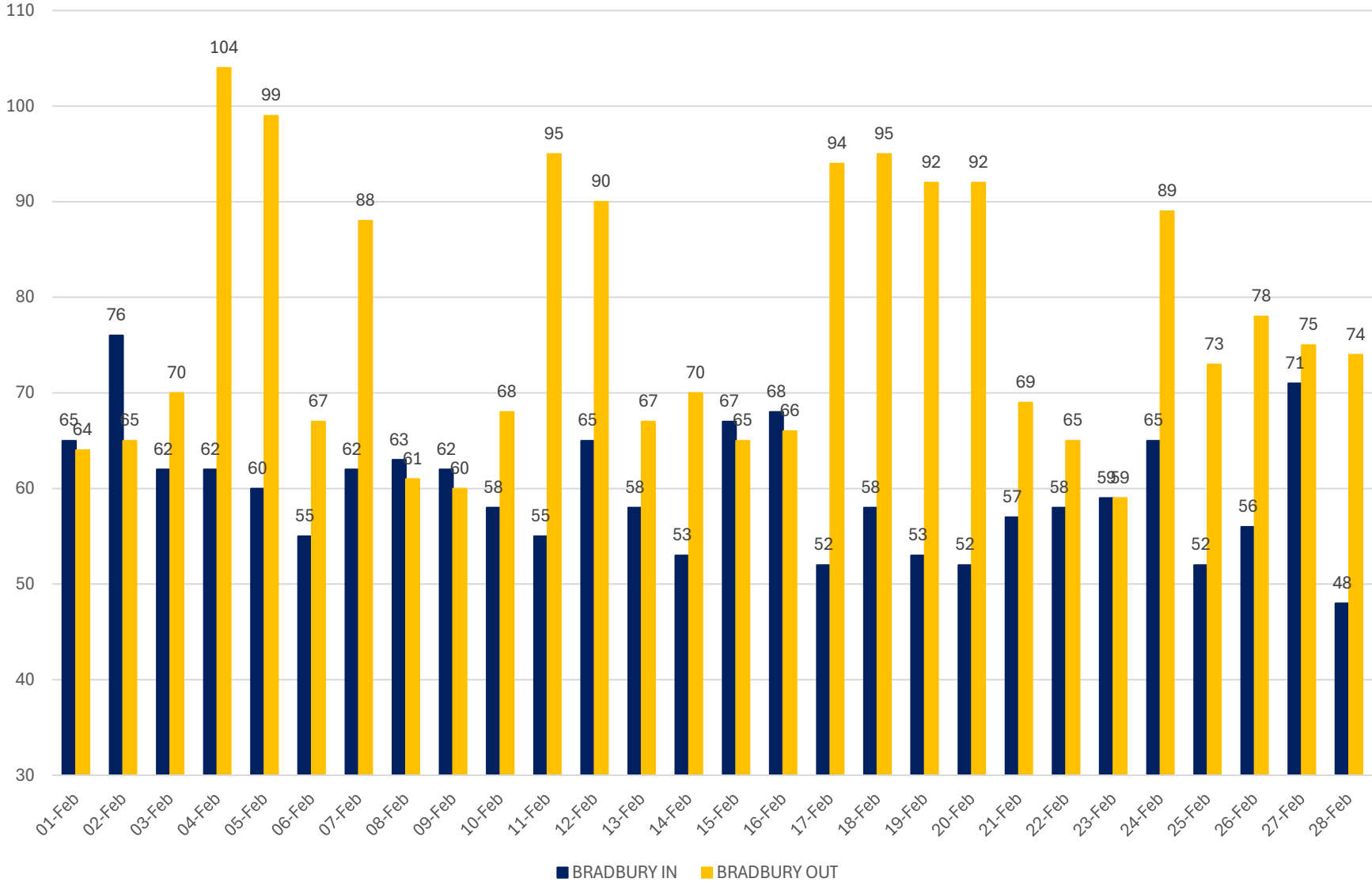


Leofric Outbound by Speed Groups -
Weekend



**Bradbury Lane
- Max Speed
by
Day of Month**

Bradbury Lane Max Daily Speed



Leofric Close
- Max Speed
by
Day of Month

Leofric Close Max Daily Speed

