

This bulletin is to update you on progress, as we move from Phase 1 into Phase 2

During Phase 1, we've been working on replacing the central barrier on the A38 southbound between Branston and Hilliard's Cross. To reduce the need for future closures, we've been carrying out other much needed work including gully clearing, road resurfacing, managing diseased trees and replacing signposts. Phase 1 is due to finish by Friday 5 May, after which we'll switch to the northbound side.

Phase 2

Phase 2 of our work on the A38 northbound carriageway, between Hilliards Cross and Alrewas,, will start after the King's Coronation weekend, on Tuesday 9 May 2023. Our work will be similar to Phase 1, with overnight closures (8pm to 6am) Monday to Friday.

The A38 between Alrewas and Branston will not be closed until later in Phase 2, although some lane restrictions and closures will be needed.

Additional Work

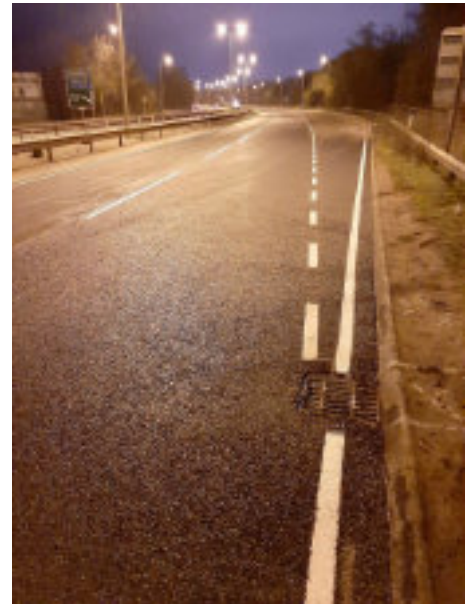
We want to reduce future road closures here, by doing as much as possible during the current scheme of work. Since the project began, National Highways have allocated substantial extra funding towards additional resurfacing, road marking, LED lighting upgrades and reflective road studs. Road users have already seen the benefit on the southbound carriageway, and we have more to complete on the northbound side.

East Staffordshire and Lichfield Council's are also using our road closures to clear litter from the verges alongside the A38.

Lichfield and East Staffordshire Councils removed:

- Over 900 bags of litter.
- 16 Truck tyres
- 4 Mattresses
- Many large items such as car bumpers, headlights & wheel trims.

Over 70 tonnes of detritus and silt was swept from the road.



Phases 3 and 4

During Phase 3, we will be working on Rykneld Street and Burton Road at Alrewas. This means that there will be no northbound access to the A38 from Alrewas. The work is scheduled to start in July 2023, for approximately six weeks.

Phase 3 also includes some southbound carriageway closures to upgrade street lighting and resurfacing.

Phase 3 will also require three full weekend closures of the A38 northbound between Alrewas and Wychnor Bridges as follows

- From 8pm on Friday 21 July 2023 to 6am on Monday 23 July 2023
- From 8pm on Friday 28 July 2023 to 6am on Monday 31 July 2023
- From 8pm on Friday 18 August to 6am on Monday 21 August

Phase 4 involves work on service roads at Gorshall and Branston in early August.

Further information about these phases will be provided in due course.

Programme dates are subject to change. Please see below to subscribe to weekly updates

40 MPH Speed Limit

We currently have a 40mph speed limit in place for safety reasons, as we are removing and replacing the central barrier. During this work, speeds need to be lower to reduce the risk of a vehicle crossing through the central reservation.

Diversion Route & Route Planning

We've put in place a clearly signed diversion route which has been agreed with the local authority as the most suitable route for both the amount and type of traffic being diverted. This diversion route follows roads on the National Highways strategic road network including the A50, M1, A42 and A5.

This route is necessary as the rural roads through surrounding villages are not suitable for the high volume of traffic carried by the A38. There are also several weight restrictions, where lorries cannot pass through. Drivers are encouraged to plan their journey, looking for the best way of avoiding the area during our closures.

Social Value

During the project, Carnell and other supply chain partners are doing a little extra to help the community. We're leasing space from the National Memorial Arboretum for our works compound. While we're here, we'll be volunteering a few pieces of work to improve and maintain this important local amenity. We're also in talks with some of the parish councils, to try and help rural communities connect with an increasingly digital world.

The environment is high on Carnell's priorities too. Our compound is powered by a solar generator, and our welfare vehicle also has solar panels. We're also using bio-diesel in our plant, along with several other green initiatives.



Further information

For weekly updates about this scheme and other work in the area, please subscribe to our weekly A38 Bulletin by emailing noreplyA38WMids@nationalhighways.co.uk

Further information about the scheme is also available by visiting <https://nationalhighways.co.uk/our-roads/west-midlands/a38-fracley-to-barton-combined-work/>.