

Contact our HS2 Helpdesk team on **08081 434 434**

HS2 Phase 2a Update

West Midlands to Crewe | October 2021

High Speed Two (HS2) is the new high speed railway for Britain. Phase 2a is the section of the new railway between the West Midlands and Crewe.

This newsletter explains what work has been undertaken since Royal Assent in February 2021 and what you can expect to see taking place over the next few months. It shares some of the ways you can find out more about what is happening in your area and provides insight into how we are building the railway.

What work is happening

Across Phase 2a, HS2 contractors are now undertaking a range of preparatory activity that needs to be completed before we start building the new railway. Over the next few months you will see them carrying out various surveys and ground investigations, and setting up some of our construction sites.

Ground investigation

We are carrying out ground investigations at over 1,000 sites across Phase 2a. These investigations started in November 2020 and are expected to be completed in early 2022. They will enable us to gain further detailed geotechnical information to inform design development.

Early environmental work

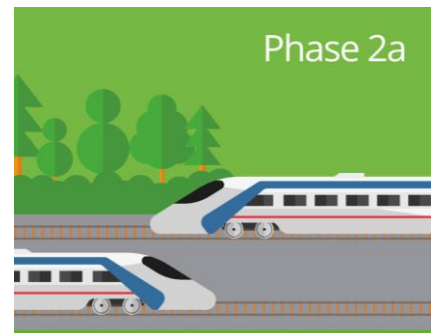
The early environmental work will establish critical environmental mitigation and translocation sites, creating new habitats for local wildlife

before any main construction starts.

Ecological and archaeological surveys informing this work are now starting. HS2 will also be taking possession of the land where mitigation work will take place. You will see fencing around these sites ahead of work starting in 2022.

Early civils work

A programme of early civils work to improve and modify key junctions and local roads is also being progressed. This is to improve traffic flows ahead of the main construction traffic.



Steps to building the new railway

- In 2017 we submitted a hybrid Bill to Parliament where proposals went through public consultation and over three years of scrutiny.
- In February 2021 we gained Royal Assent giving us the powers to build this section of the railway.
- In 2021 preparatory work started and will continue into 2024.
- The railway design development and assurance is ongoing with detailed design starting in 2023.
- Construction of the new railway is expected to start in late 2024.



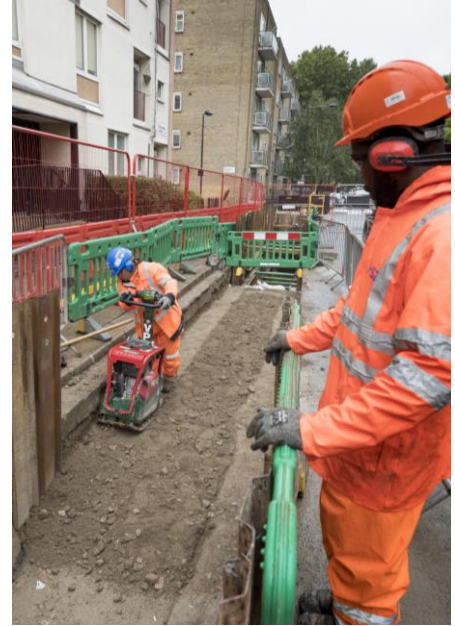
At two key junction improvement sites, Hanchurch Junction 15 and A515 Wood End Lane, Lichfield, survey and ground investigation work has started. These will inform the designs and the steps we take to minimise any environmental impacts.

A further programme of 20 road improvements across the Phase 2a route will also be delivered. Surveys across these sites are expected to

start before Christmas, initially focusing on ecological walkovers to help us understand the local wildlife populations.

Utility diversion

The diversion of utilities started earlier this year and are expected to take around five years to complete. So far, the utility companies' contactors have been undertaking ground investigations surveys with some diversions now starting.



HS2 in the community

Funding now available

A fund of £5 million is available for local communities and businesses affected by the construction of HS2 via the Community and Environment Fund (CEF) and the Business and Local Economy Fund (BLEF).

The CEF is designed to give communities the opportunity to share in the benefits of HS2, through the funding of local projects that aim to improve the local area. This could be from improving or replacing community, sports or recreational facilities to nature conservation enhancement projects.


BLEF grants are for local business support organisations and local authorities to help maintain business activity in local communities that are experiencing disruption. This can include projects such as discount card schemes, job creation support programmes, and the running of events or campaigns to promote footfall to local economic centres.

The funds have been available for Phase 2a since April 2021 and we are pleased to see that applications have started to come in.


For more information about each of these funds, including the types of projects they can support and how to apply, please visit:

www.groundwork.org.uk/hs2funds



 An NHS healing and peace garden is one project to benefit from our community and environment funds in Phase One.



 A community playground in Boddington was another project to have received funding from our community and environment funds in Phase One.

Key activity in your local area

The below section highlights some of the key activity our contractors are undertaking in areas across the Phase 2a route.

Fradley to Colton

In September we started ecological surveys and ground investigations in preparation for the proposed changes to the junction of the A515 and widening of Wood End Lane. The surveys will take around three months to complete. The main construction at the junction is expected to start in autumn 2022.

Utilities provider Cadent Gas also started preparatory work for relocating an existing gas pipeline near Rileyhill, south of Kings Bromley. To access the working area for moving the pipeline in early 2022, they will need to use part of the existing bridlepath on land south of Common Lane. In September they started enhancing the bridlepath to ensure it is suitable for vehicle use.

The National Grid pylon replacement and restringing works from Handsacre to Kings Bromley that started in July is due to be completed around the end of this year.

Colwich to Swynnerton

Ground investigation surveys are currently ongoing at the M6 Junction 15/A500 Hanchurch Interchange, with temporary traffic management in place. These works started in July and are expected to finish at the end of October.

Cadent Gas is carrying out ground investigation surveys on land off Hanyards Lane, near Brancote, and within the grounds of Ingestre Park Golf Club. They will also be starting ground investigation and archaeological surveys through October and November around Great Haywood, Yarlet and Marston. These surveys will inform the design development for the diversion of existing pipelines to allow the railway to be constructed.



Whitmore to Crewe

Before we could start the ground investigations in several locations in Whitmore Wood we needed to carry out further environmental work to ensure all ecological considerations had been assessed.

This included ecological surveys and ground preparation activity, such as vegetation clearance in and around the wood. An Ecological Clerk of Works has been on-site overseeing this work, providing ecological scrutiny. Now completed, ground investigations have started in the area.



Sharing information with communities

New community webpage

Over the past few months, we have introduced a number of improvements to the HS2 website and how we share information with you. As part of this work, we have moved our Phase 2a local community pages to the HS2 website. These provide you with an overview of the route and work in your local area. You can find your local community page at

www.HS2inyourarea.co.uk

Join the HS2 mailing list to continue to receive updates

Earlier this year we also changed the way we share information with you via email, giving you more choice about what information you would like to receive from us.

We provide regular updates about the project, including notifications of our upcoming work. We will also inform you about any upcoming community information events.

If you would like to continue to receive updates from HS2, and you haven't done so already, you can sign up for email notifications at

<https://engagement.hs2.org.uk/join-mailing-list/>

Community information events

Due to Covid-19, over the past year we have been keeping communities informed in different ways, sharing updates through our mailing lists, improving our local community pages, and holding webinars and regular virtual 1-2-1 meetings for communities.

As restrictions have lifted the engagement team is going back out into the communities. We are meeting local residents and stakeholders, and holding events in areas along Phase 2a.

At the end of October and into early November we are holding 1-2-1 meetings in venues across Phase 2a for local residents who would like to know more about HS2 and our upcoming work. Further events and updates are also being planned by HS2 and the contractors delivering the work on our behalf.

As well as through email alerts, you can learn about upcoming events on the HS2 website events page at

www.hs2.org.uk/events



New 'In Your Area' map

A new interactive map has been launched on the HS2 website. You can search and find out about current HS2 work in your area and find out more about the property schemes and opportunities available locally.

Enter your search in the field below or zoom to a location on the map. For information on all road works and closures (including HS2 related closures), visit <https://one.network/uk>

Filter our work items by:

2 work items

[Notice of ground investigation surveys off Tollidish Lane, Great Haywood](#)
11 October 2021 to 15 November 2021
Distance: 3.1km
Ref: HS2-MW-UT-Ph1-Ar-No-N2-UT-6-21/09/2021

[Update: Notice of ground investigation surveys at Ingestre Park Golf Club, east of Stafford](#)
22 September 2021 to 13 October 2021
Distance: 3.71km
Ref: HS2-MW-OTH-Ph1-Ar-No-N2-Prog-

You can access the map on the HS2 website at www.hs2.org.uk/in-your-area/map

Notifications of work

We are committed to making sure communities are made aware in advance of any activities taking place in their area.

We share notifications of our work with local residents at least two weeks in advance of work taking place.

These notifications will outline the work that is being carried out and its purpose, any potential disruption that local communities may experience, and the steps we are taking to minimise any effects of the work.

Local residents will receive a copy delivered to their home. The notifications are also shared with those registered on our HS2 mailing list and placed on the HS2 'In Your Area' map.

HS2

Notification

Notice of ground investigation surveys off Tollidish Lane, Great Haywood

September 2021 | www.hs2.org.uk

High Speed Two (HS2) is the new high speed railway for Britain. To allow for the construction of the new railway and to continue to ensure a safe and reliable gas supply, Cadent is moving underground gas pipelines in the Stafford area. We will keep people up to date as our works progress.

What are we doing?
In early 2023, we will be starting work to move an existing gas pipeline on land either side of Tollidish Lane, Great Haywood. Before we move the pipeline, we need to carry out some surveys off Tollidish lane, to understand more about the land we will be working in. The work will involve drilling boreholes and digging small pits so we can take samples of the ground to analyse. We will be carrying out the surveys from **11 October 2021**.

The work will involve:

- Setting up a small welfare cabin on land north of Tollidish Lane
- Securing our working area with fencing.
- Drilling boreholes and digging small pits so we can take samples of

Duration

- Five weeks, starting **11 October 2021**
- Our working hours will be 8.00am to 6.00pm (Mon-Fri)
- We will be on-site one hour either side of these times for set-up and close-down

What to expect

- Work taking place on land off Tollidish Lane

If you have a question about our work you can contact the HS2 Helpdesk team, available all day, every day on **08081 434 434** or at hs2enquiries@hs2.org.uk

HS2 in focus

This section looks at some of the ways we are building the new railway to ensure that we are respectful to local people and the local environment, and bring benefits where we can.

Working with the seasons and the environment

HS2 is committed to delivering many miles of ecological and landscape investments, alongside constructing the new railway, in a way to best minimise ecological disturbance. To do this we need to undertake seasonal ecological surveys to record the activities of protected and notable species.

The information we collect is incorporated into the design development of our construction work and the planning of environmental mitigation work such as habitat creation and species translocation. The surveys are also used to support the licenses and consents we need to carry out work, with regulators ensuring any potential impacts are being managed appropriately.

Autumn

With falling temperatures and shorter days, migratory species start leaving and those staying will start feeding up for winter. Trees and vegetation begin to drop their leaves, revealing clues to what species are in the area. Ecologists commence with surveys for species such as dormice, with gnawed hazelnuts providing evidence trails. We also start creating new habitats for great crested newts who are leaving their breeding ponds in search of suitable hibernation spots.

Winter

With vegetation dying down, further evidence of species can be identified such as wintering feeding and resting sites for bird populations that are tracked by the gathering of large flocks. Tree cavities become visible allowing ecologists to identify, access and record potential bat roosts. We also start to carry out our mitigation work to avoid impacting more sensitive breeding periods.

Spring

With increasing temperatures and longer days, spring is the most active time of year for wildlife. Migratory species return and new nests, burrows and roosts are established. Birds begin to sing making them easier to identify and record, great crested newts return to breeding ponds where they can be counted, and reptiles start basking in the early spring sun. Vegetation emerges and flowers, making identification and habitat classification easier to record and map. The new planting, ponds, artificial roosts and badger setts created by HS2 in winter start to develop and attract protected species.

Summer

With local wildlife busy feeding, growing and breeding, summer is a vital time for updating our survey data. Wildlife naturally changes their distribution so by recording these changes the design and planning of appropriate mitigation can be done to encourage, move and enhance existing territories away from our construction sites.



Understanding and mitigating flood risk

The impacts of flooding on communities can be significant and that is why ensuring the new railway does not increase the risk of extreme flooding to local communities, nor worsen the impact should they occur, is a key consideration in developing its detailed designs.

We are committed to mitigating any loss of floodplain by the creation of replacement storage areas with the capacity for a 1 in 100-year event, including an allowance for climate change.

To ensure that we understand, consider, and manage such flood risks, we are carrying out surveys and hydraulic modelling of the significant watercourses and culvert crossings over the next six months. We will be using the latest data and climate change guidance to ensure the design and any mitigation is effective for both now and in the future.

We work closely with the Environment Agency and Lead Local Flood Authorities who will assess and approve any of our work to watercourses and their floodplains. We are also engaging with local parish councils, gathering community knowledge on local flood issues. This allows our designs to be developed in consideration of these localised challenges, with design alterations which are beneficial in managing flood risk in the local area being considered and included, where practicable.

We are also keen to support opportunities for environmental schemes with a flood risk element as part our Community and Environment Fund.



Learning more about how we are building the railway

Get in touch to let us know what you would like to know more about in our next HS2 in Focus feature at

HS2enquires@hs2.org.uk or 08081 434 434

Learn more about the work the HS2 environment and flood risk teams are doing to protect local wildlife, ecology and communities in our Information Papers at:

www.gov.uk/government/publications/environment-hs2-phase-2a-information-papers

Keeping you informed

HS2

We are committed to keeping you informed about work on HS2. This includes ensuring you know what to expect and when to expect it, as well as how we can help.

Residents' Charter and Commissioner

The Residents' Charter is our promise to communicate as clearly as we possibly can with people who live along or near the HS2 route.

www.gov.uk/government/publications/hs2-residents-charter

We also have an independent Residents' Commissioner whose job is to make sure we keep to the promises we make in the Charter and to keep it under constant review. Find reports at:

www.gov.uk/government/collections/hs2-ltd-residents-commissioner

You can contact the Commissioner at: residentscommissioner@hs2.org.uk

Construction Commissioner

The Construction Commissioner's role is to mediate and monitor the way in which HS2 Ltd manages and responds to construction complaints. You can contact the Construction Commissioner by emailing: complaints@hs2-cc.org.uk

Property and compensation

You can find out all about HS2 and properties along the line of route by visiting:

www.gov.uk/government/collections/hs2-property

Find out if you're eligible for compensation at:

www.gov.uk/claim-compensation-if-affected-by-hs2

Holding us to account

If you are unhappy for any reason you can make a complaint by contacting our HS2 Helpdesk team. For more details on our complaints process, please visit our website:

www.hs2.org.uk/how-to-complain

Contact Us

Contact our HS2 Helpdesk team all day, every day of the year on:

 Freephone **08081 434 434**

 Minicom **08081 456 472**

 Email **HS2enquiries@hs2.org.uk**

Write to:

FREEPOST

HS2 Community Engagement

Website **www.hs2.org.uk**

To keep up to date with what is happening in your local area, visit: **www.HS2inyourarea.co.uk**

Please contact us if you'd like a free copy of this document in large print, Braille, audio or easy read. You can also contact us for help and information in a different language.

HS2 Ltd is committed to protecting personal information. If you wish to know more about how we use your personal information please see our Privacy Notice <https://www.gov.uk/government/publications/high-speed-two-ltd-privacy-notice>

Reference number: HS2-Ph2a-RW-CR-10-11/10/2021

High Speed Two (HS2) Limited, registered in England and Wales.

Registered office: Two Snowhill, Snow Hill Queensway, Birmingham B4 6GA.

Company registration number: 06791686. VAT registration number: 888 8512 56