

# Notice of overnight lane closures and slip road closures on A38 and A5127

December 2020 | [www.hs2.org.uk](http://www.hs2.org.uk)

High Speed Two (HS2) is the new high speed railway for Britain. Balfour Beatty VINCI is working in partnership with HS2 Ltd to build the new High Speed railway in your area.

## There will be overnight lane and slip road closures

There will be overnight lane closures on the A38 near Streethay, Lichfield as well as closures to the slip roads between the A38 and the A5127. We are working closely with Highways England to will allow us to safely access these areas to undertake drainage and ground investigation surveys.

The closures will be in place between 10:00pm and 5:00am on the phased dates below. Our teams may be on site up to one hour before and one hour after the works to set up and secure the site at the end of each day. While the slip road closures are operational signed diversion routes will be in place. If we are unable to complete the surveys during these closures we will use additional contingency dates w/c 18 January 2021.

- **Phase 1**, southbound slip road and lane closure: 11 January & 12 January
- **Phase 2**, northbound slip road and lane closure: 13 January & 14 January
- **Phase 3**, northbound and southbound lane closures: 15 January

Please see the map overleaf for more information for each phase.

## HS2 and the COVID-19 outbreak

We are continually reviewing the works on our construction sites in line with Government and Public Health England (PHE) advice on dealing with COVID-19. The Government's current COVID-19 strategy makes clear that construction activity can continue as long as it complies with this guidance. The health and safety of our workforce and the communities we affect is our key priority. Please be assured that those sites that are currently still working are doing so because they can operate within PHE and construction industry guidelines.

**If you have a question about HS2 or our works, please contact our HS2 Helpdesk team on 08081 434 434 or email [hs2enquiries@hs2.org.uk](mailto:hs2enquiries@hs2.org.uk)**

## Duration of works

Between 10:00pm and 5:00am in three phases from 11 January – 15 January 2021.

Please note that the times and dates in this notification are subject to change.

## What to expect

Temporary overnight lane closures on the A38 and slip road closures between the A38 and the A5127 and use of a diversion.

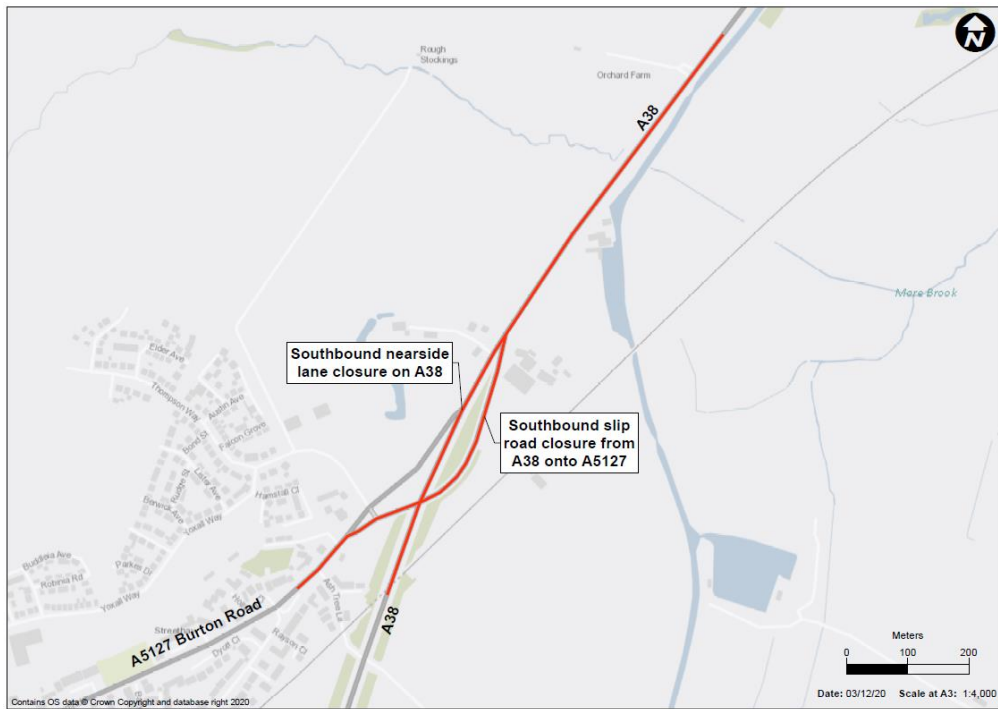
## What we will do

Keep all sites safe and secure, while keeping disruption to a minimum.

Ensure all traffic management is clearly signed.

Ask you to sign up for regular updates at [hs2instaffordshire.co.uk](http://hs2instaffordshire.co.uk)

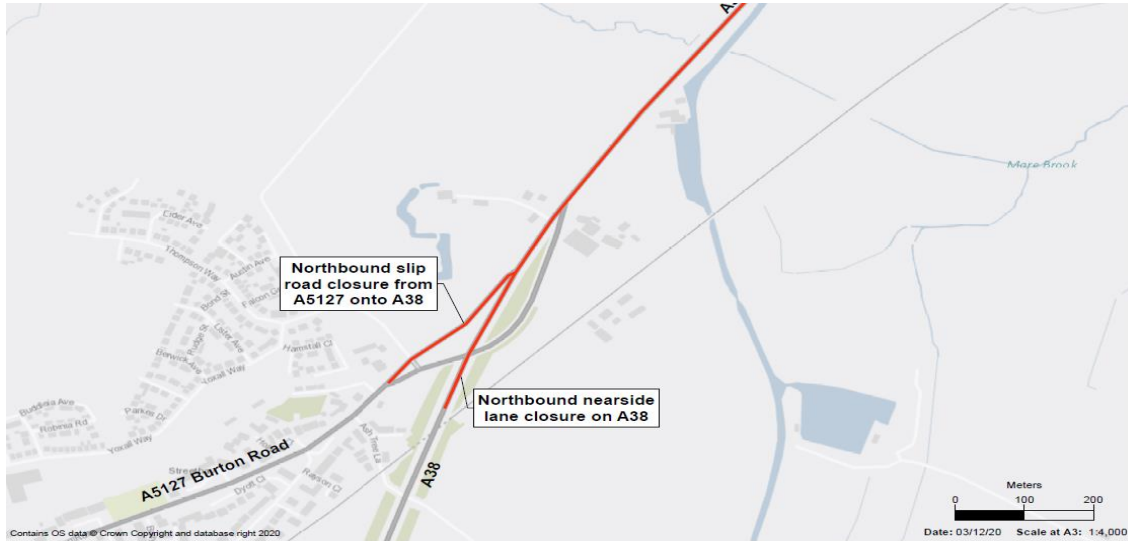
## Phase 1: Southbound slip road and lane closure – 11 January and 12 January 2021



## Phase 1: Diversion Route -- 11 January and 12 January 2021



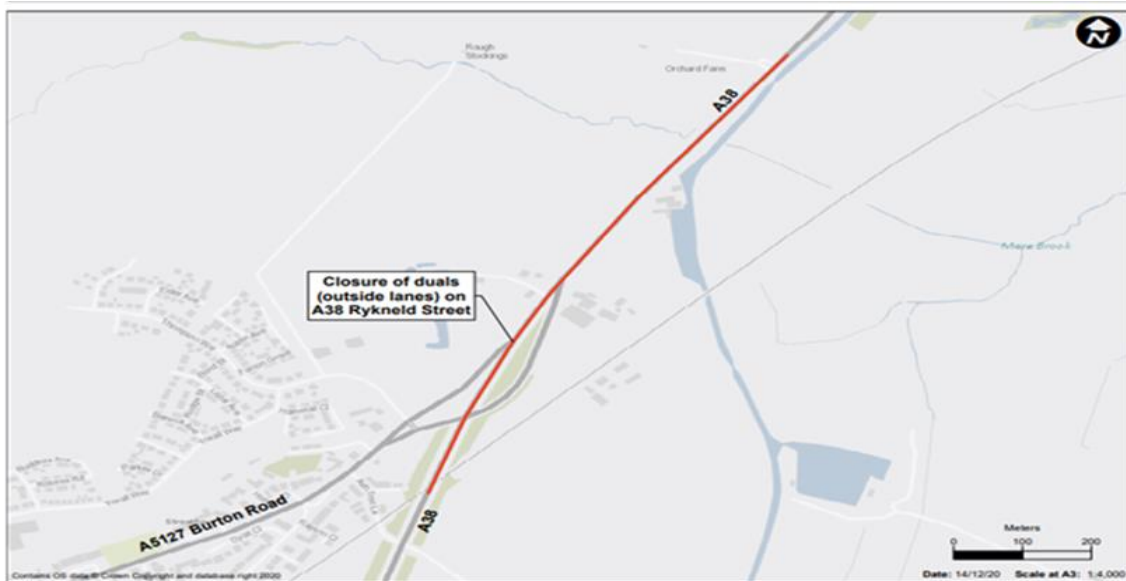
## Phase 2: Northbound slip road and lane closure – 13 January and 14 January 2021



## Phase 2: Diversion route – 13 January and 14 January 2021



## Phase 3: Lane closures – 15 January 2021



# Keeping you informed

We are committed to keeping you informed about work on HS2. This includes ensuring you know what to expect and when to expect it, as well as how we can help.

## Residents' Charter and Commissioner

The Residents' Charter is our promise to communicate as clearly as we possibly can with people who live along or near the HS2 route.

[www.gov.uk/government/publications/hs2-residents-charter](http://www.gov.uk/government/publications/hs2-residents-charter)

We also have an independent Residents' Commissioner whose job is to make sure we keep to the promises we make in the Charter and to keep it under constant review. Find reports at:

[www.gov.uk/government/collections/hs2-ltd-residents-commissioner](http://www.gov.uk/government/collections/hs2-ltd-residents-commissioner)

You can contact the Commissioner at: [residentscommissioner@hs2.org.uk](mailto:residentscommissioner@hs2.org.uk)

## Construction Commissioner

The Construction Commissioner's role is to mediate and monitor the way in which HS2 Ltd manages and responds to construction complaints. You can contact the Construction Commissioner by emailing: [complaints@hs2-cc.org.uk](mailto:complaints@hs2-cc.org.uk)

## Property and compensation

You can find out all about HS2 and properties along the line of route by visiting:

[www.gov.uk/government/collections/hs2-property](http://www.gov.uk/government/collections/hs2-property)

Find out if you're eligible for compensation at:

[www.gov.uk/claim-compensation-if-affected-by-hs2](http://www.gov.uk/claim-compensation-if-affected-by-hs2)

## Holding us to account

If you are unhappy for any reason you can make a complaint by contacting our HS2 Helpdesk team. For more details on our complaints process, please visit our website:

[www.hs2.org.uk/how-to-complain](http://www.hs2.org.uk/how-to-complain)

## Contact Us

Contact our HS2 Helpdesk team all day, every day of the year on:

 Freephone **08081 434 434**

 Minicom **08081 456 472**

 Email **[hs2enquiries@hs2.org.uk](mailto:hs2enquiries@hs2.org.uk)**

Write to:

**FREEPOST**

**HS2 Community Engagement**

Website **[www.hs2.org.uk](http://www.hs2.org.uk)**

To keep up to date with what is happening in your local area, visit:

**[www.hs2inyourarea.co.uk](http://www.hs2inyourarea.co.uk)**

**Please contact us if you'd like a free copy of this document in large print, Braille, audio or easy read. You can also contact us for help and information in a different language.**

HS2 Ltd is committed to protecting personal information. If you wish to know more about how we use your personal information please see our Privacy Notice <https://www.gov.uk/government/publications/high-speed-two-ltd-privacy-notice>

**Reference number:** HS2-EW-BBV-Ph1-Ar-No-N1-Traf-50-25/01/2021

High Speed Two (HS2) Limited, registered in England and Wales.

Registered office: Two Snowhill, Snow Hill Queensway, Birmingham B4 6GA.

Company registration number: 06791686. VAT registration number: 888 8512 56.